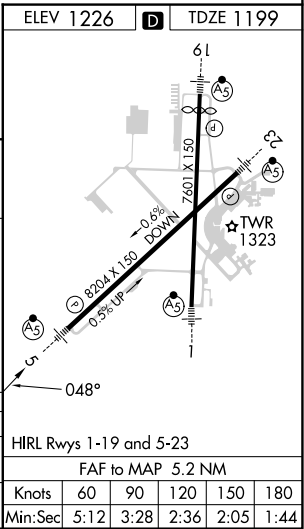
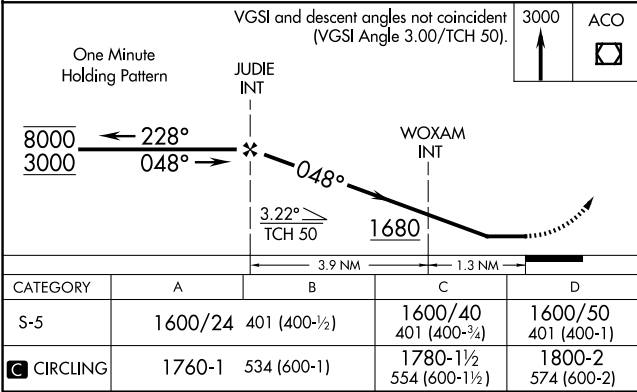
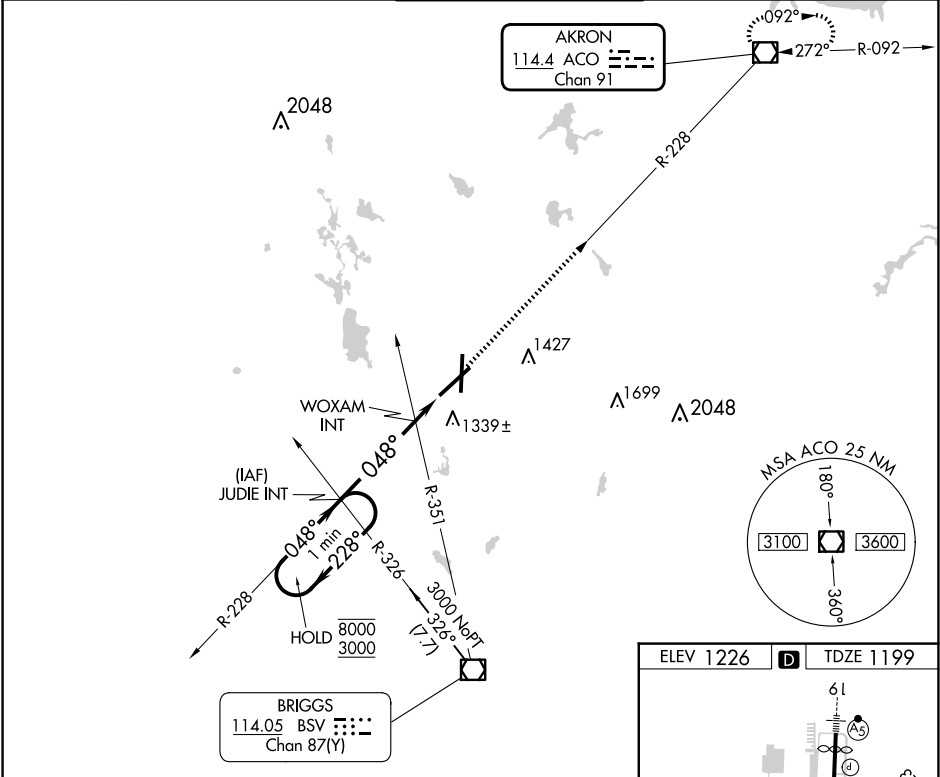


VOR/DME ACO	APP CRS	Rwy Idg	8204
114.4	048°	TDZE	1199
Chan 91		Apt Elev	1226

VOR RWY 5
AKRON-CANTON RGNL (CAK)

Dual VOR receivers required.		MALSR	MISSED APPROACH: Climb to 3000 direct ACO VOR/DME and hold.	
ATIS	CLEVELAND APP CON ★	AKRON-CANTON TOWER		CLNC DEL
121.05	125.5 269.25	134.75 279.575		132.05
		GND CON		
		121.7 348.6		



EC-2, 10 JUL 2025 to 07 AUG 2025

EC-2, 10 JUL 2025 to 07 AUG 2025