

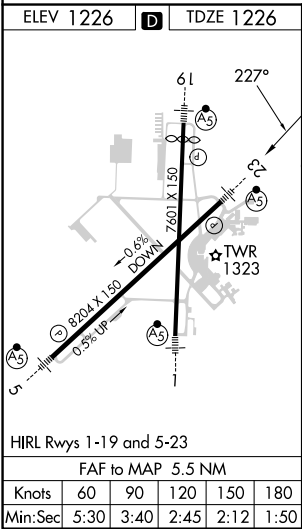
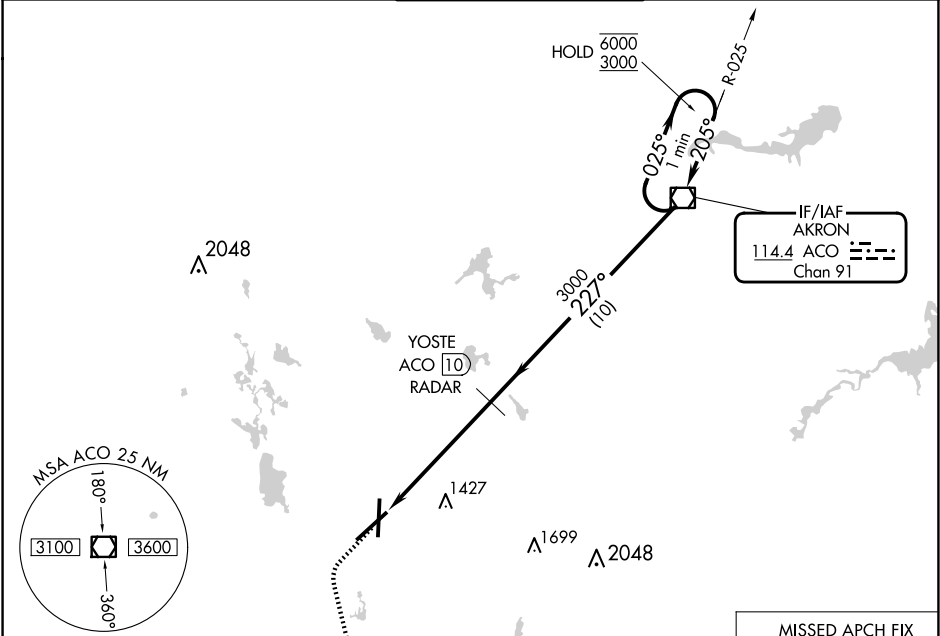
VOR/DME ACO	APP CRS	Rwy Idg	8204
114.4	227°	TDZE	1226
Chan 91		Apt Elev	1226








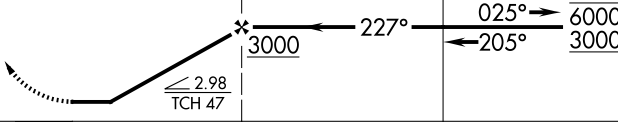

VOR RWY 23

AKRON-CANTON RGNL(CAK)

DME or RADAR required.		MALSR	MISSED APPROACH: Climb to 3000 then left turn direct BSV VOR/DME and hold.	

ATIS 121.05	CLEVELAND APP CON * 125.5 269.25	AKRON-CANTON TOWER 134.75 279.575	GND CON 121.7 348.6	CLNC DEL 132.05
----------------	-------------------------------------	--------------------------------------	------------------------	--------------------



  		<div>BRIGGS</div> <div>BSV </div> <div>114.05</div> <div>Chan 87(Y)</div>		
<div>3000</div> 	<div>BSV</div> 	<div>YOSTE</div> <div>ACO <span>10</span></div> <div>RADAR</div>	<div>ACO</div> <div>VOR/DME</div>	<div>One Minute</div> <div>Holding Pattern</div>
				
CATEGORY	A	B	C	D
S-23	1680/24 454 (500-½)	1680/40 454 (500-¾)	1680/50 454 (500-1)	
 CIRCLING	1760-1 534 (600-1)	1780-1½ 554 (600-1½)	1800-2 574 (600-2)	

EC-2, 10 JUL 2025 to 07 AUG 2025

EC-2, 10 JUL 2025 to 07 AUG 2025