

AKRON, OHIO

AL-638 (FAA)

25051

WAAS CH 77620 W05A	APP CRS 054°	Rwy Idg 8204 TDZE 1199 Apt Elev 1226
--	------------------------	---

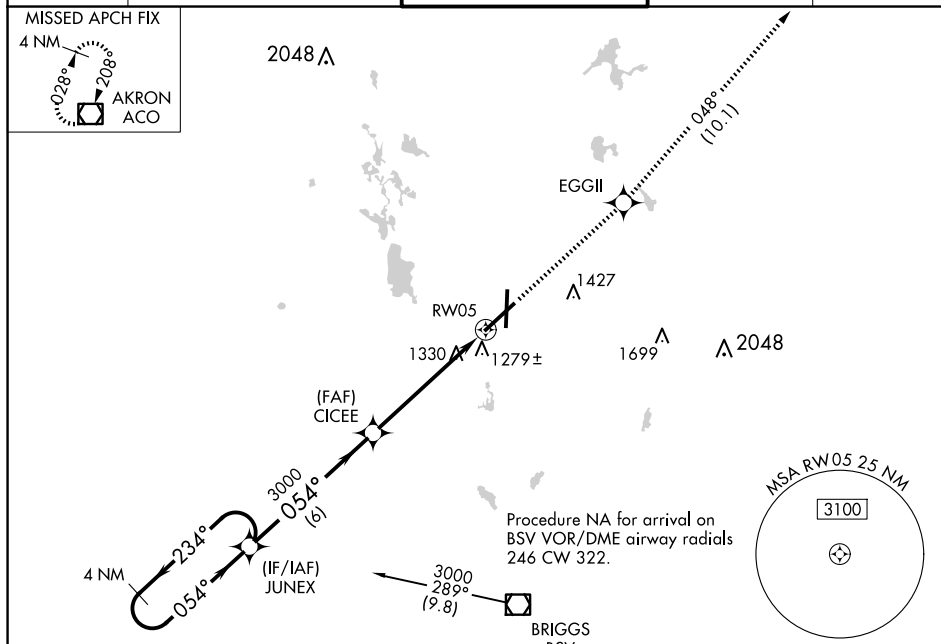
RNAV (GPS) RWY 5
AKRON-CANTON RGNL (CAK)

T For uncompensated Baro-VNAV systems, LNAV/VNAV NA below -17°C (2°F) or above 46°C (114°F). DME/DME RNP-0.3 NA.
 ** RVR 1800 authorized with use of FD or AP or HUD to DA.

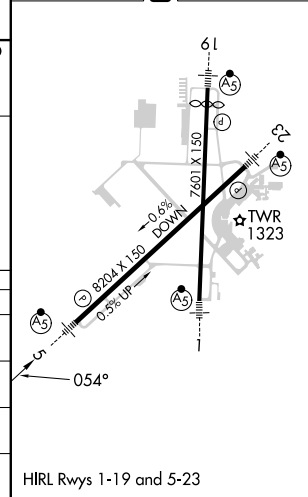
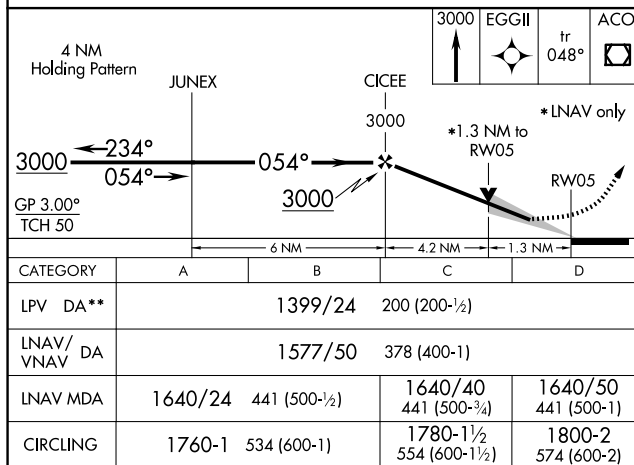


MISSED APPROACH: Climb to 3000
direct EGGII and on track 048° to
ACO VOR/DME and hold.

ATIS 121.05	CLEVELAND APP CON ★ 125.5 269.25	AKRON-CANTON TOWER 134.75 279.575	GND CON 121.7 348.6	CLNC DEL 132.05
-----------------------	--	---	-------------------------------	---------------------------



ELEV 1226	D	TDZE 1199
-----------	----------	-----------



AKRON, OHIO
Orig-C 12AUG21

40°55'N - 81°27'W

AKRON-CANTON RGNL (CAK)
RNAV (GPS) RWY 5

EC-2, 10 JUL 2025 to 07 AUG 2025