

WAAS CH 90220 W23A	APP CRS 235°	Rwy Idg TDZE 1226 Apt Elev 1226
--	------------------------	---

RNAV (GPS) RWY 23

AKRON-CANTON RGNL(CAK)

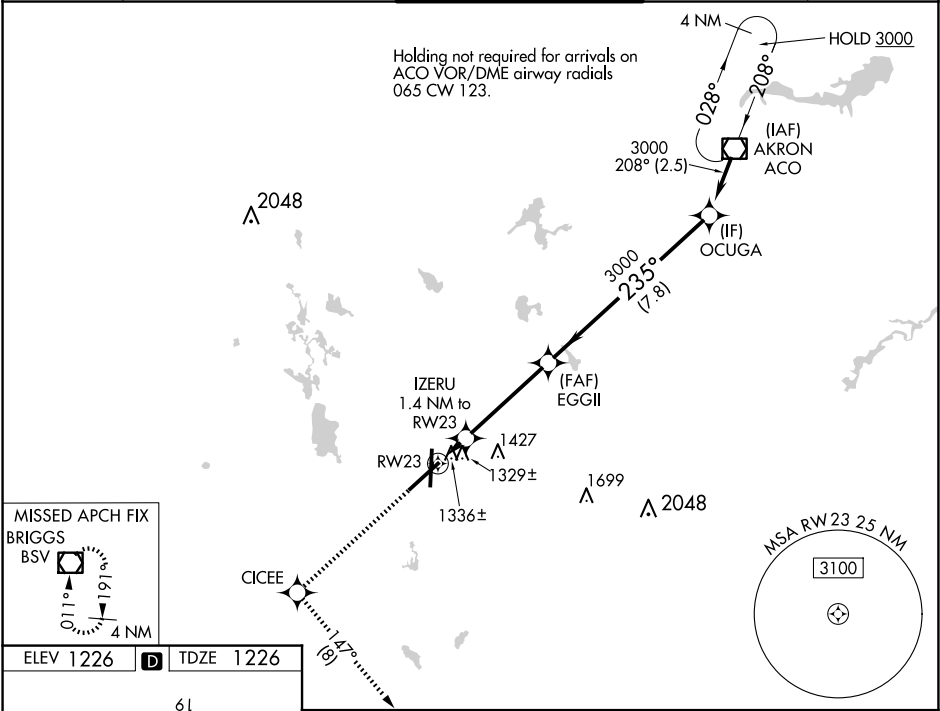
⚠

For uncompensated Baro-VNAV systems, LNAV/VNAV NA below -17°C (2°F) or above 46°C (114°F). DME/DME RNP-0.3 NA. For inoperative MALSR, increase LNAV Cat D visibility to RVR 6000.
** RVR 1800 authorized with use of FD or AP or HUD to DA.

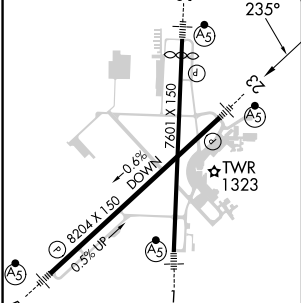
MALSR

MISSED APPROACH: Climb to 3000 direct CICEE and on track 147° to BSV VOR/DME and hold.

ATIS 121.05	CLEVELAND APP CON* 125.5 269.25	AKRON-CANTON TOWER 134.75 279.575	GND CON 121.7 348.6	CLNC DEL 132.05
-----------------------	---	---	-------------------------------	---------------------------



ELEV 1226	D	TDZE 1226
-----------	----------	-----------



<div>3000</div> <div>↑</div> <div>CICEE</div> <div><div>tr</div><div>147°</div></div> <div>BSV</div> <div><div></div><div></div><div></div></div>				<div>Procedure</div> <div>Turn</div> <div>NA</div>			
<div>* LNAV only</div> <div><div><div>RW23</div><div>1.4 NM to RW23</div><div>1.4</div><div>4 NM</div><div>7.8 NM</div></div><div><div>EGGII</div><div>3000</div><div>235°</div><div>3000</div><div>3000</div></div><div><div>OCUGA</div><div>3000</div></div><div><div>GP 3.00°</div><div>TCH 45</div></div></div>							
CATEGORY	A		B	C	D		
LPV DA**	1426/24 200 (200-½)						
LNAV/VNAV DA	1691/60 465 (500-1¼)						
LNAV MDA	1640/24	414 (500-½)	1640/40 414 (500-¾)	1640/50 414 (500-1)			
CIRCLING	1760-1	534 (600-1)	1780-1½ 554 (600-½)	1800-2 574 (600-2)			

EC-2, 10 JUL 2025 to 07 AUG 2025

EC-2, 10 JUL 2025 to 07 AUG 2025