

25051

RNAV (GPS) RWY 19
AKRON-CANTON RGNL (CAK)

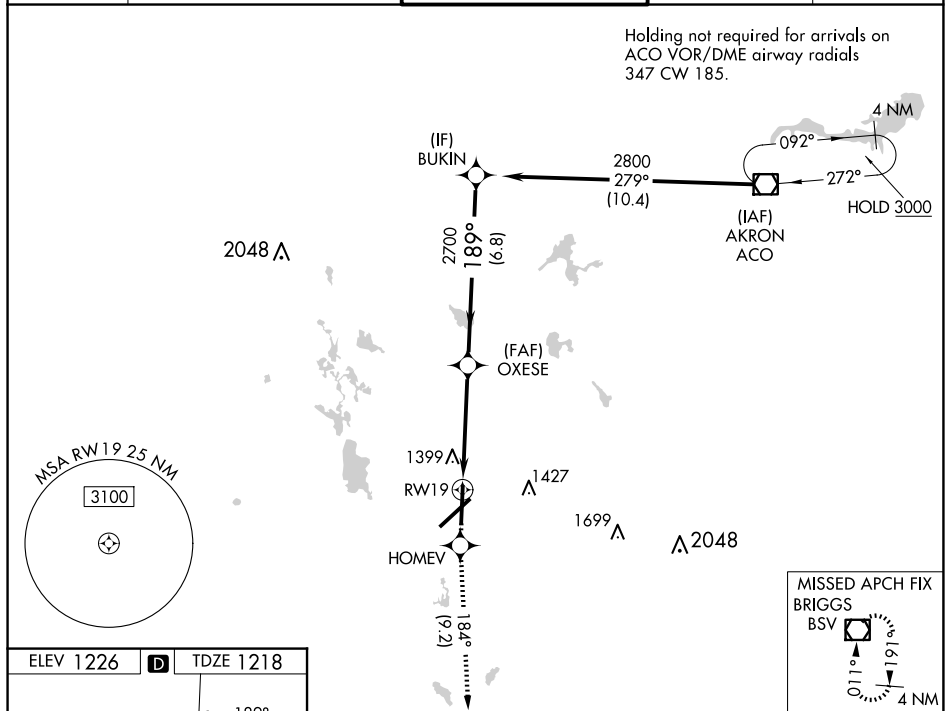
For uncompensated Baro-VNAV systems, LNAV/VNAV NA below -17°C (2°F) or above 46°C (114°F). DME/DME RNP-0.3 NA.
 ** RVR 1800 authorized with use of FD or AP or HUD to DA.


MALSR

MISSED APPROACH: Climb to 3000
direct HOMEV and on track 184° to
BSV VOR/DME and hold.

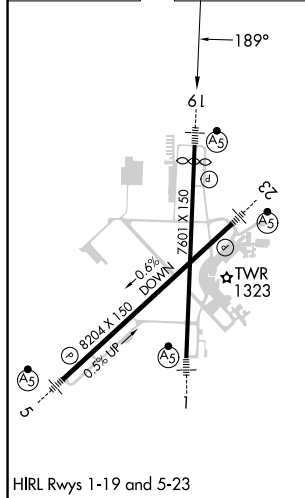
ATIS 121.05	CLEVELAND APP CON ★ 125.5 269.25	AKRON-CANTON TOWER 134.75 279.575	GND CON 121.7 348.6	CLNC DEL 132.05
----------------	-------------------------------------	--------------------------------------	------------------------	--------------------

Holding not required for arrivals on
ACO VOR/DME airway radials
347 CW 185.



MISSED APCH FIX
BRIGGS
BSV 

ELEV 1226	D	TDZE 1218
-----------	----------	-----------



3000 ↑	HOMEV ✱	tr 184°	BSV ◻	Procedure Turn NA			
* LNAV only 				GP 3.00° TCH 53			
CATEGORY	A		B		C		D
LPV DA**	1418/24 200 (200-½)						
LNAV/ VNAV DA	1753-1½ 535 (600-1½)						
LNAV MDA	1700/24 482 (500-½)				1700/40 482 (500-¾)	1700/50 482 (500-1)	
CIRCLING	1760-1 534 (600-1)				1780-1½ 554 (600-1½)	1800-2 574 (600-2)	

AKRON, OHIO
Orig-B 12AUG21

40°55'N-81°27'W

AKRON-CANTON RGNL (CAK)
RNAV (GPS) RWY 19

EC-2, 10 JUL 2025 to 07 AUG 2025