

LOC/DME I-EQX 108.3 Chan 20	APP CRS 054°	Rwy ldg TDZE Apt Elev 8204 1199 1226
---	------------------------	--

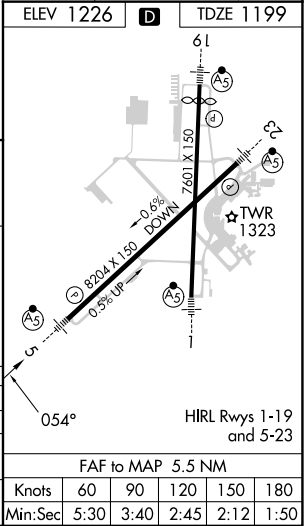
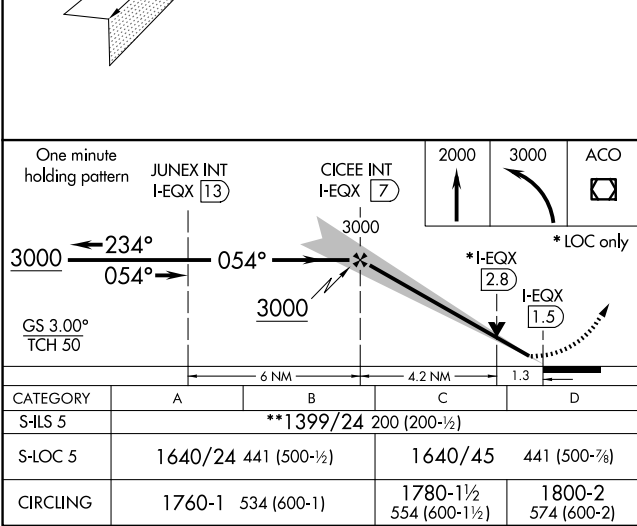
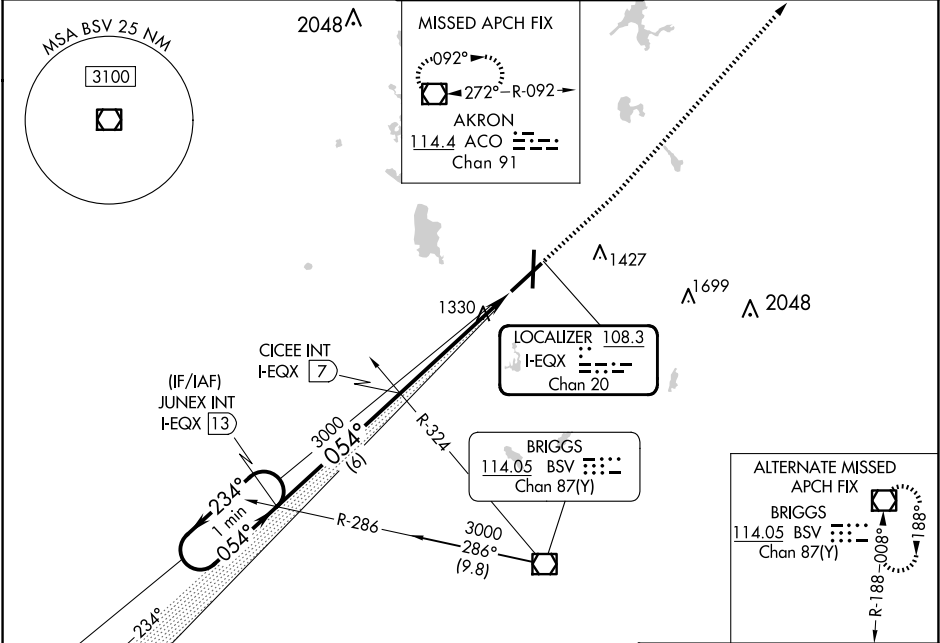
ILS or LOC RWY 5
AKRON-CANTON RGNL (CAK)

⚠
**RVR 1800 authorized with use of FD or AP or HUD to DA.

MALSR

MISSED APPROACH: Climb to 2000 then climbing left turn to 3000 direct ACO VOR/DME and hold.

ATIS 121.05	CLEVELAND APP CON * 125.5 269.25	AKRON-CANTON TOWER 134.75 279.575	GND CON 121.7 348.6	CLNC DEL 132.05
-----------------------	--	---	-------------------------------	---------------------------



EC-2, 10 JUL 2025 to 07 AUG 2025

EC-2, 10 JUL 2025 to 07 AUG 2025