

LOC/DME I-GGZ 108.3 Chan 20	APP CRS 234°	Rwy Idg TDZE 1226 Apt Elev 1226
---	------------------------	---

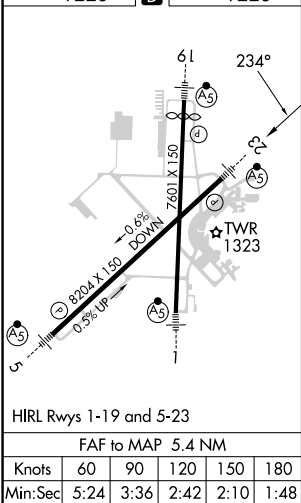
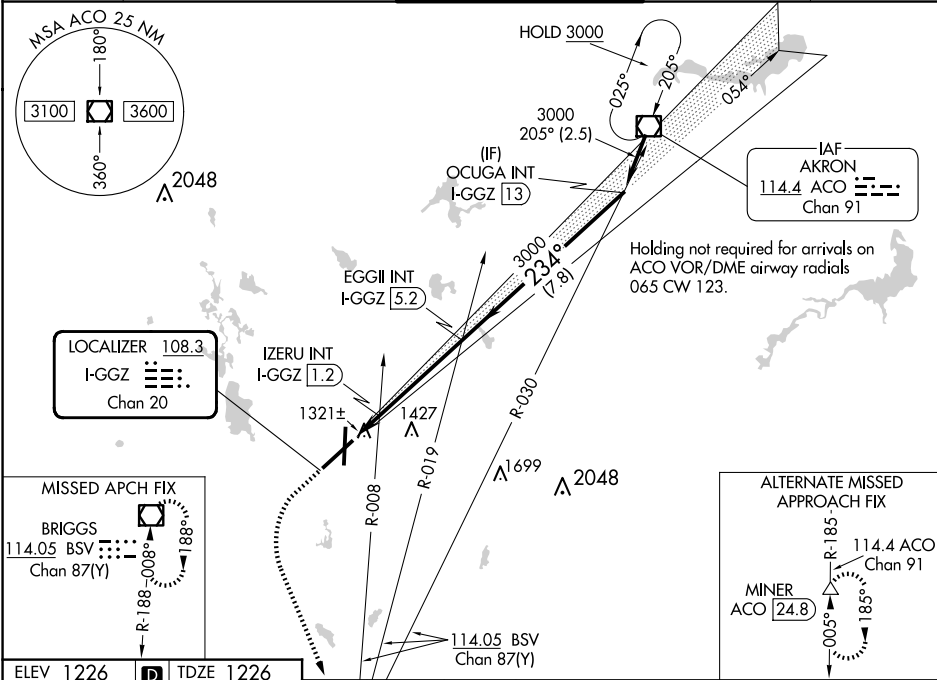
ILS or LOC RWY 23
AKRON-CANTON RGNL (CAK)


V **RVR 1800 authorized with use of FD or AP or HUD to DA.

MALSR

MISSED APPROACH: Climb to 2500 then climbing left turn to 3000 direct BSV VOR/DME and hold.

ATIS 121.05	CLEVELAND APP CON ★ 125.5 269.25	AKRON-CANTON TOWER 134.75 279.575	GND CON 121.7 348.6	CLNC DEL 132.05
-----------------------	--	---	-------------------------------	---------------------------



7500 ↑	3000 ↘	BSV 	EGGII INT I-GGZ 5.2		OCUGA INT I-GGZ 13
*LOC only		IZERU INT I-GGZ 1.2	3000	Procedure Turn NA	

EC-2, 10 JUL 2025 to 07 AUG 2025

EC-2, 10 JUL 2025 to 07 AUG 2025