


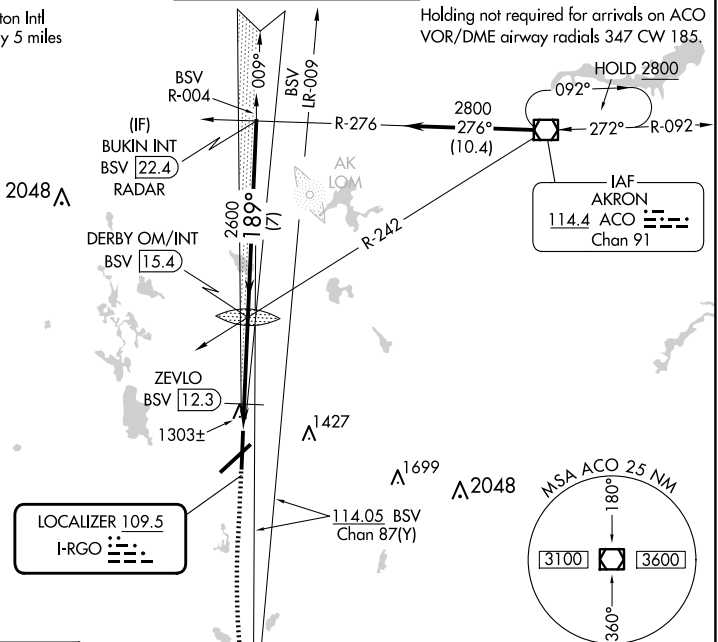
LOC I-RGO 109.5	APP CRS 189°	Rwy Idg TDZE Apt Elev	7000 1218 1226
---------------------------	------------------------	-----------------------------	---

ILS or LOC RWY 19
AKRON-CANTON RGNL (CAK)

V ** RVR 1800 authorized with the use of FD or AP or HUD to DA. For inoperative ALS, increase CAT C/D visibility to RVR 6000. ZEVL0 fix minimums: For inoperative ALS, increase CAT C/D visibility to RVR 5500.		MALSR 	MISSED APPROACH: Climb to 1700 then climbing left turn to 3000 direct BSV VOR/DME and hold.		
ATIS 121.05	CLEVELAND APP CON ★ 125.5 269.25	AKRON-CANTON TOWER 134.75 279.575		GND CON 121.7 348.6	CLNC DEL 132.05


CAUTION: OM for Akron Fulton Intl
may be received approximately 5 miles
north of DERBY OM.

Holding not required for arrivals on ACO
VOR/DME airway radials 347 CW 185.



MISSED APCH FIX

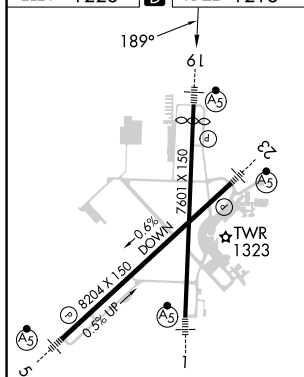
BRIGGS
BSV
114.05
Chan 87(Y)

LOCALIZER 109.5
I-RGO 

MSA ACO 25 NM

A partial number line is shown with the numbers 3100 and 3600. An arrow points from the number 18 down to a box located between 3100 and 3600.

ELEV 1226		TDZE 1218
-----------	---	-----------



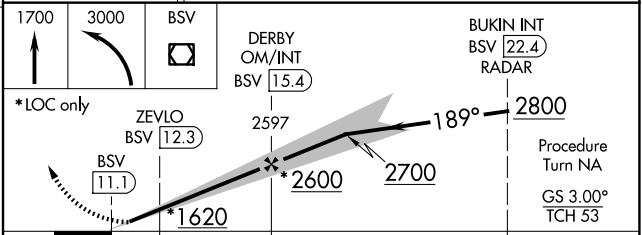
HIRL Rwy 1-19 and 5-23

FAF to MAP 4.2 NM

Knots	60	90	120	150	180
Min:Sec	4:12	2:48	2:06	1:41	1:24

AKRON, OHIO

Amdt 8B 12AUG21



	1.1	3.1 NM	7 NM	
CATEGORY	A	B	C	D
S-ILS 19	**1418/24 200 (200-½)			
S-LOC 19	1620/24 402 (400-½)		1620/40 402 (400-¾)	
CIRCLING	1760-1 534 (600-1)		1780-1½ 554 (600-½)	1800-2 574 (600-2)
ZEVL0 FIX MINIMUMS				
S-LOC 19	1580/24 362 (400-½)			1580/40 362 (400-¾)
CIRCLING	1760-1 534 (600-1)		1780-1½ 554 (600-½)	1800-2 574 (600-2)

AKRON-CANTON RGNL (CAK)

ILS or LOC RWY 19

40°55'N-81°27'W