

VOR/DME MOT	APP CRS	Rwy Idg	5955
117.1	067°	TDZE	1712
Chan 118		Apt Elev	1716

VOR RWY 8
MINOT INTL (MOT)

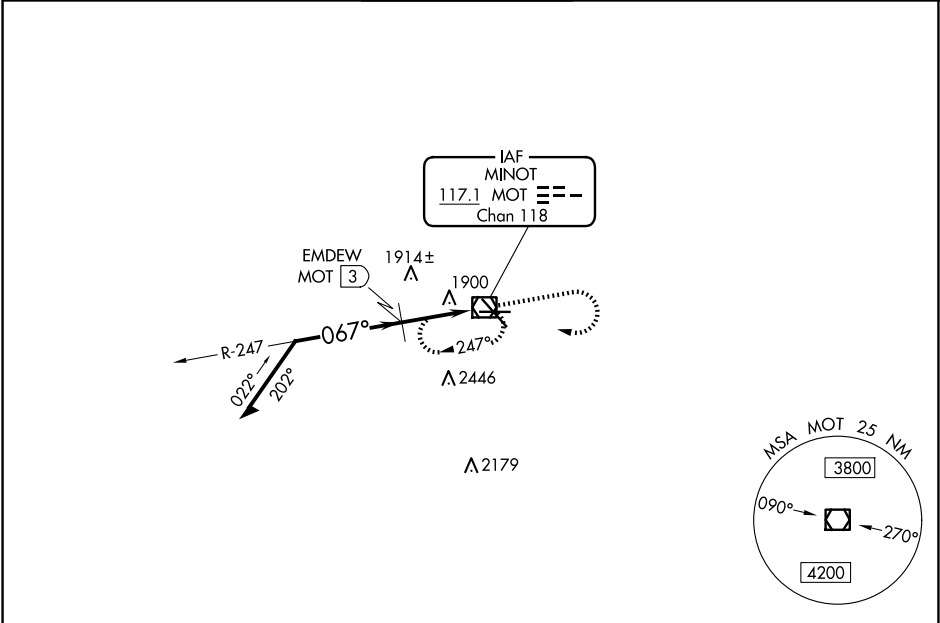
▼

▲

Rwy 8 helicopter visibility reduction below ¾ NA.

MISSED APPROACH: Climb to 3800 then right turn direct MOT VOR/DME and hold.

ASOS 118.725	MINOT APP CON ★ 119.6 363.8	MAGIC CITY TOWER ★ 118.2 (CTAF) 251.125	GND CON 121.9	UNICOM 122.95
-----------------	--------------------------------	--	------------------	------------------



VGSI and descent angles not coincident (VGSI Angle 3.00/TCH 45).

Remain within 10 NM

3800

2760

067°

247°

EMDEW MOT 3

MOT 1.4

3.26°

TCH 49

1.6 NM

1.3

MOT VOR/DME

3800

MOT

CATEGORY	A	B	C	D
S-8	2760-1¼ 1048 (1100-1¼)	2760-1½ 1048 (1100-1½)	2760-3	1048 (1100-3)
CIRCLING	2760-1¼ 1044 (1100-1¼)	2760-1½ 1044 (1100-1½)	2800-3	1084 (1100-3)
EMDEW FIX MINIMUMS				
S-8	2180-1	468 (500-1)	2180-1⅜ 468 (500-1⅜)	2180-1½ 468 (500-1½)
CIRCLING	2200-1 484 (500-1)	2240-1 524 (600-1)	2800-3	1084 (1100-3)

ELEV 1716

D

TDZE 1712

REIL Rwy 13

REIL Rws 8 and 26

HIRL Rws 8-26 and 13-31

NC-1, 10 JUL 2025 to 07 AUG 2025

NC-1, 10 JUL 2025 to 07 AUG 2025