

NC-1, 10 JUL 2025 to 07 AUG 2025

MINOT, NORTH DAKOTA

AL-635 (FAA)

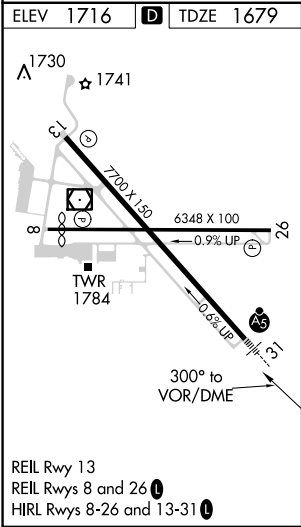
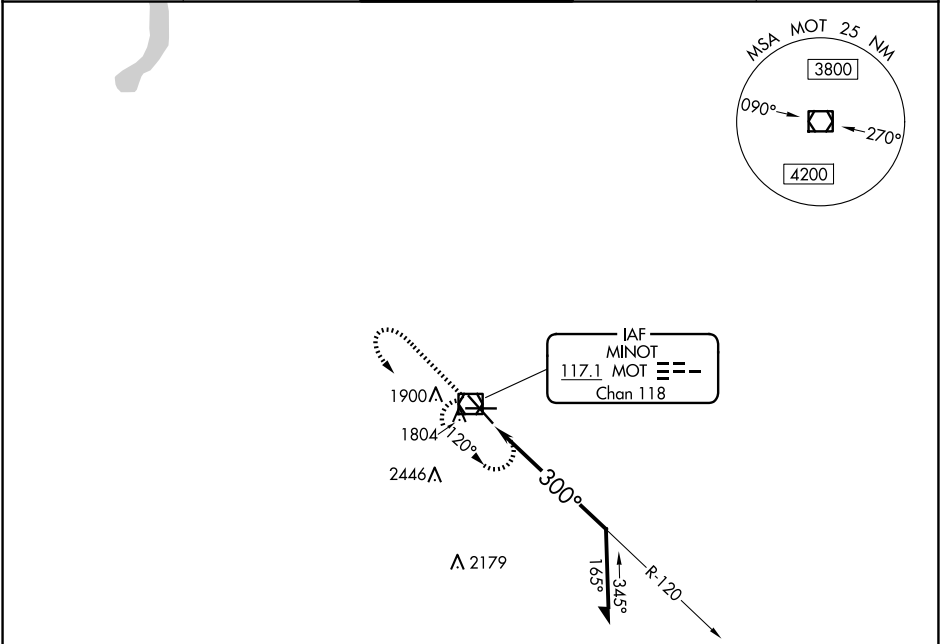
22055

VOR/DME MOT	APP CRS	Rwy Idg	7700
117.1	300°	TDZE	1679
Chan 118		Apt Elev	1716

VOR RWY 31
MINOT INTL (MOT)

		MISSED APPROACH: Climb to 3500 then left turn direct MOT VOR/DME and hold.
--	--	--

ASOS 118.725	MINOT APP CON ★ 119.6 363.8	MAGIC CITY TOWER ★ 118.2 (CTAF) 0 251.125	GND CON 121.9	UNICOM 122.95
-----------------	--------------------------------	--	------------------	------------------



<div>3149 Λ</div>				
<div>3500 ↑</div>	<div><div>↷</div><div>MOT VOR/DME </div></div>	<div><div>MOT VOR/DME</div><div>Remain within 10 NM</div><div><div>120°</div><div>3500</div><div>300°</div></div></div>		
<div><div>CATEGORY</div><div>A</div><div>B</div><div>C</div><div>D</div></div>				
S-31	2200/24 521 (500-½)		2200/55 521 (500-1)	2200/60 521 (500-1¼)
CIRCLING	2200-1 484 (500-1)	2240-1 524 (600-1)	2800-3 1084 (1100-3)	

MINOT, NORTH DAKOTA
Amdt 11B 07OCT21

48°15'N-101°17'W

MINOT INTL (MOT)
VOR RWY 31

NC-1, 10 JUL 2025 to 07 AUG 2025