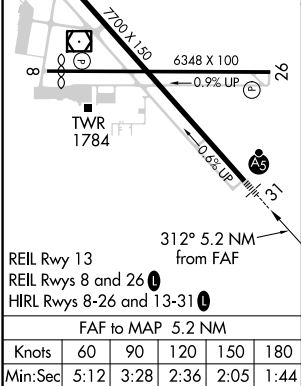
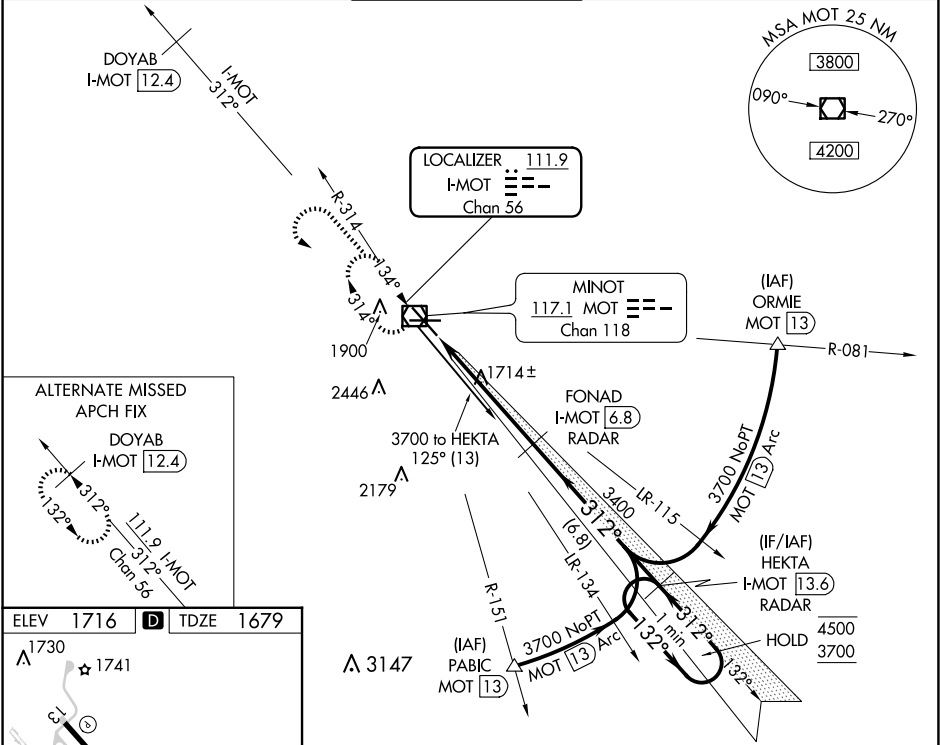


LOC/DME I-MOT <b>111.9</b> Chan <b>56</b>	APP CRS <b>312°</b>	Rwy Idg <b>7700</b> TDZE <b>1679</b> Apt Elev <b>1716</b>
---	------------------------	---

ILS or LOC RWY 31  
MINOT INTL (MOT)

DME or RADAR required.	MALSR 	MISSED APPROACH: Climb to 3700 then left turn direct MOT VOR/DME and hold.
▼ For Inop ALS, increase S-ILS 31 Cat E visibility to RVR 4000, ▲ and S-LOC 31 Cat C, D and E visibility to RVR 4500. Autopilot coupled approach NA below 2500.		

ASOS <b>118.725</b>	MINOT APP CON ★ <b>119.6 363.8</b>	MAGIC CITY TOWER ★ <b>118.2 (CTAF) 0 251.125</b>	GND CON <b>121.9</b>	UNICOM <b>122.95</b>
------------------------	---------------------------------------	---	-------------------------	-------------------------



3700 ↑	MOT 	Use I-MOT DME when on the LOC course.			One Minute Holding Pattern
		FONAD I-MOT [6.8] RADAR	HEKTA I-MOT [13.6] RADAR		
* LOC only.	I-MOT ★ [2.5]				
	I-MOT [1.6]				
	0.9	4.3 NM	6.8 NM		
CATEGORY	A	B	C	D	E
S-ILS 31	1879/24 200 (200-½)				
S-LOC 31	1980/24 301 (300-½)			1980/40 301 (300-¾)	
CIRCLING	2200-1 484 (500-1)	2240-1 524 (600-1)	2800-3 1084 (1100-3)		

NC-1, 10 JUL 2025 to 07 AUG 2025

NC-1, 10 JUL 2025 to 07 AUG 2025