

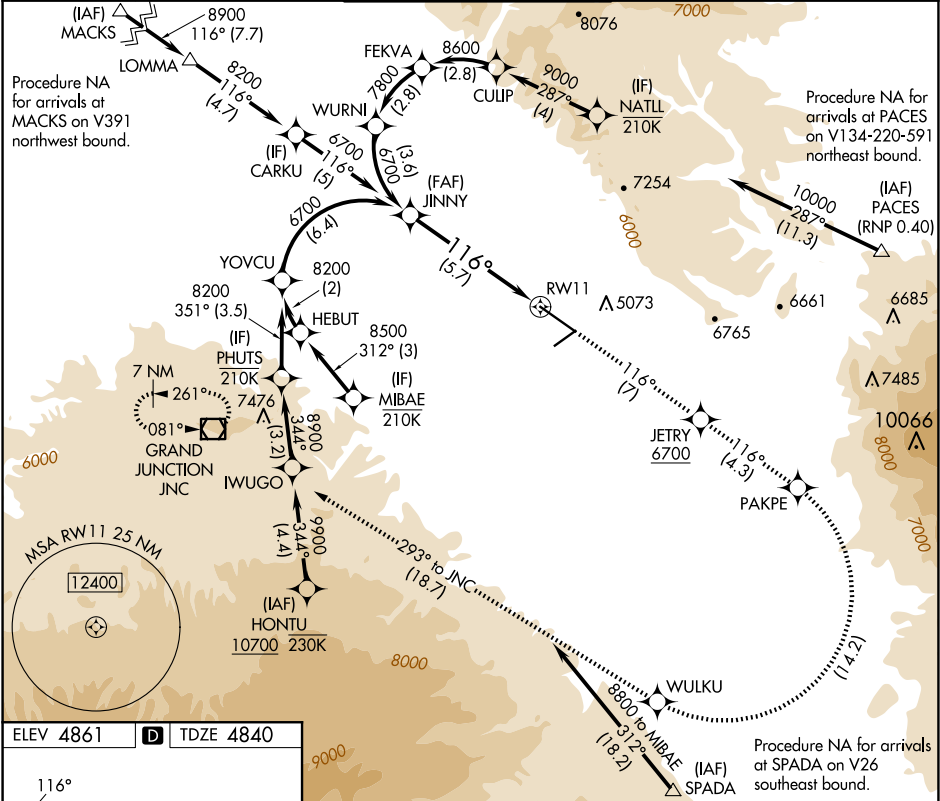
APP CRS	Rwy Ldg	9339
116°	TDZE	4840
	Apt Elev	4861

RNAV (RNP) Z RWY 11

GRAND JUNCTION RGNL (GJT)

RNP AR APCH - GPS.	MALS F	MISSED APPROACH: Climb to 9000 on track 116° to JETRY, cross JETRY at or above 6700, and track 116° to PAKPE, right turn to WULKU, and track 293° to JNC VOR/DME and hold.
▼ For uncompensated Baro-VNAV systems, procedure NA below -17°C or above 54°C. For inoperative ALS, increase RNP 0.30 all Cats visibility to 1½ SM.	⚠	

ATIS 118.55	DENVER APP CON ★ 119.7 317.4	GRAND JUNCTION TOWER ★ 118.1 (CTAF) 257.8	GND CON 121.7 257.8	UNICOM 122.95
----------------	---------------------------------	--	------------------------	------------------



	JINNY	9000	JETRY	PAKPE	WULKU	JNC
	6700	tr 116°	6700	tr 116°	tr 293°	
CATEGORY	A	B	C	D		
RNP 0.10 DA		5183/40	343 (400-¾)			
RNP 0.30 DA		5346-1¼	506 (500-1¼)			

AUTHORIZATION REQUIRED

SW-1, 10 JUL 2025 to 07 AUG 2025

SW-1, 10 JUL 2025 to 07 AUG 2025