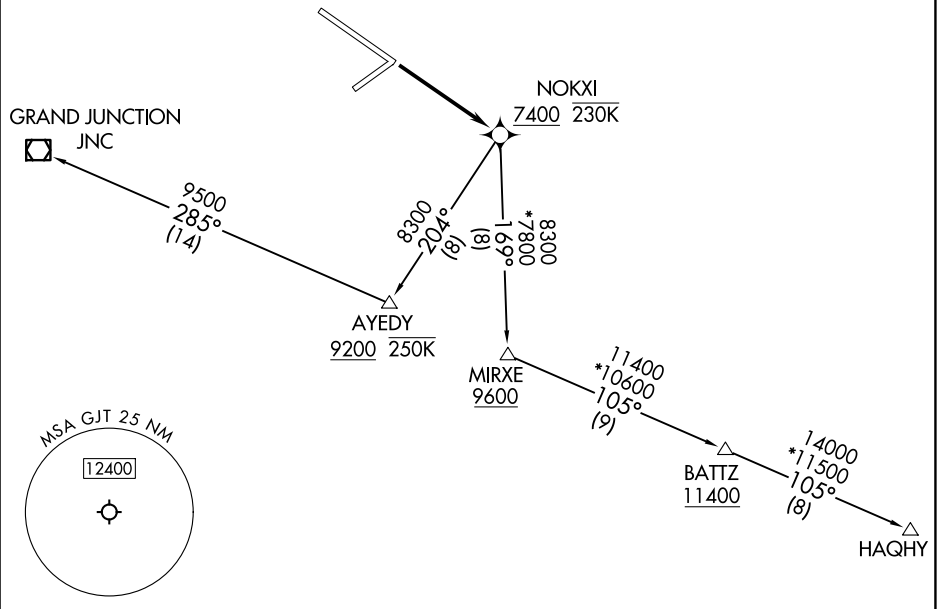


TOP ALTITUDE:
ASSIGNED BY ATC

RNAV 1 - GPS.

DENVER DEP CON *
119.7 317.4
ATIS
118.55
GND CON
121.7 257.8
GRAND JUNCTION TOWER *
118.1 257.8
UNICOM
122.95



TAKEOFF MINIMUMS

Rwys 4, 22, 29: NA - Environmental.
Rwy 11: Standard with minimum climb of 500'/NM to 5361.

NOTE: GRAND JUNCTION Transition: Do not exceed 250K until AYEDY.

NOTE: Chart not to scale.

DEPARTURE ROUTE DESCRIPTION

TAKEOFF RUNWAY 11: Climb direct NOKXI, thence. . . .

. . . (transition). Maintain ATC assigned altitude, expect filed altitude 10 minutes after departure.

GRAND JUNCTION TRANSITION (NOKXI2.JNC)

HAQHY TRANSITION (NOKXI2.HAQHY)