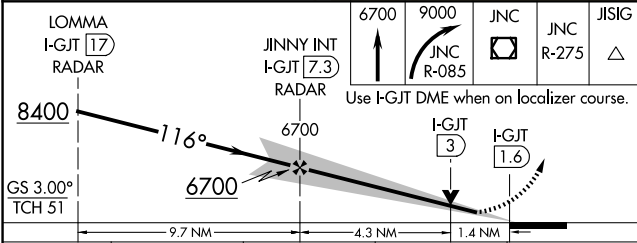
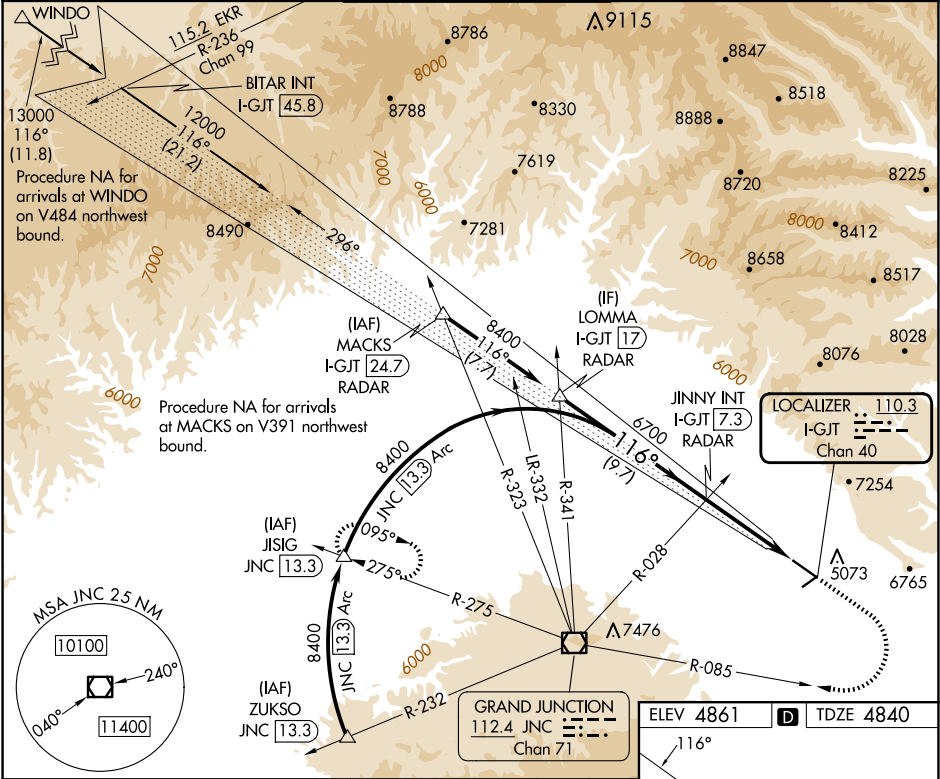


LOC/DME I-GJT <b>110.3</b> Chan <b>40</b>	APP CRS <b>116°</b>	Rwy Ldg TDZE Apt Elev <b>9339</b> <b>4840</b> <b>4861</b>
---	------------------------	--

ILS or LOC RWY 11  
GRAND JUNCTION RGNL (GJT)

 <p>Circling NA for Cat D north of Rwy 11-29. Inop table does not apply to S-ILS 11 all Cats.</p>	 <p>MALSF</p>	MISSED APPROACH: Climb to 6700 then climbing right turn to 9000 on JNC VOR/DME R-085 to JNC VOR/DME then on JNC VOR/DME R-275 to JISIG/JNC 13.3 DME and hold.
--	--	---

ATIS <b>118.55</b>	DENVER APP CON * <b>119.7 317.4</b>	GRAND JUNCTION TOWER * <b>118.1 (CTAF) 0 257.8</b>	GND CON <b>121.7 257.8</b>	UNICOM <b>122.95</b>
-----------------------	--	---	-------------------------------	-------------------------



CATEGORY	A	B	C	D
S-ILS 11	5040/40 200 (200-¾)			
S-LOC 11	5340/40 500 (500-¾)	5340/60 500 (500-1½)		
CIRCLING	5380-1 519 (600-1)	5520-1 659 (700-1)	5840-3 979 (1000-3)	

