

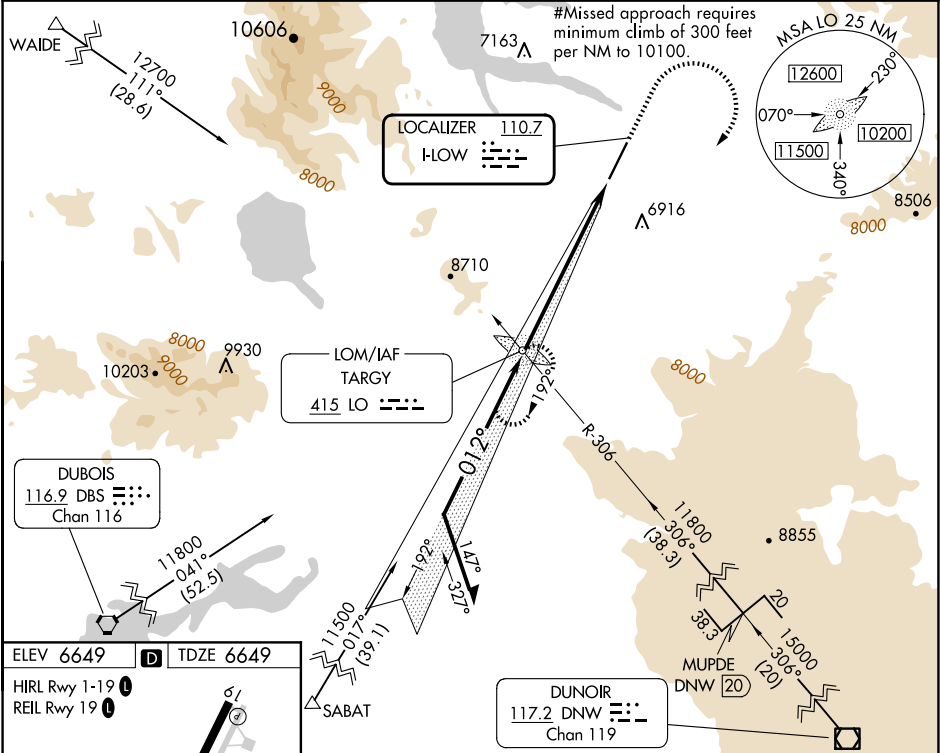
LOC I-LOW	APP CRS	Rwy Idg	8400
110.7	012°	TDZE	6649
		Apt Elev	6649

ILS or LOC RWY 1

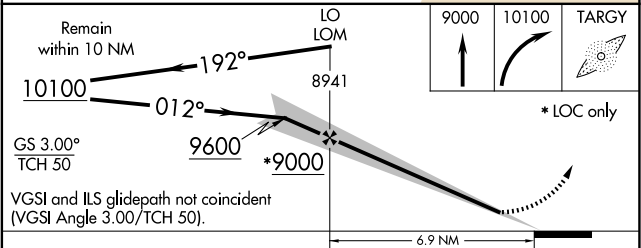
YELLOWSTONE (WYS)

ADF required. DME required for MUPDE stepdown fix.		MALSRR	MISSED APPROACH: Climb to 9000, then climbing right turn to 10100 direct TARGY LOM and hold.
NA	Obtain local altimeter setting on CTAF, when not received procedure		
-20°C	NA. Inoperative table does not apply to S-LOC 1 Cat A. For inoperative MALSRR, increase S-ILS 1 all Cats visibility to 2 3/4 mile.		

AWOS-3P	SALT LAKE CENTER	UNICOM
118.1	132.4 338.3	123.0 (CTAF) 0



ELEV 6649	D	TDZE 6649
HIRL Rwy 1-19		
REIL Rwy 19		



FAF to MAP 6.9 NM				
Knots	60	90	120	150
Min:Sec	6:54	4:36	3:27	2:46
				180
				2:18
CIRCLING				
CATEGORY				
S-ILS 1#				
S-ILS 1				
S-LOC 1				
CIRCLING				