

WAAS CH 77917 W08A	APP CRS 080°	Rwy Idg TDZE Apt Elev	9318 469 469
--	------------------------	-----------------------------	---

RNAV (GPS) RWY 8
FORT SMITH RGNL (F'SM)

RNP APCH - GPS.

⚠

ASR

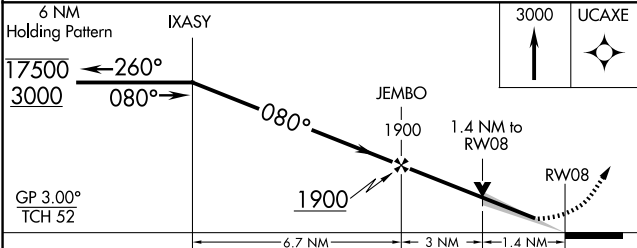
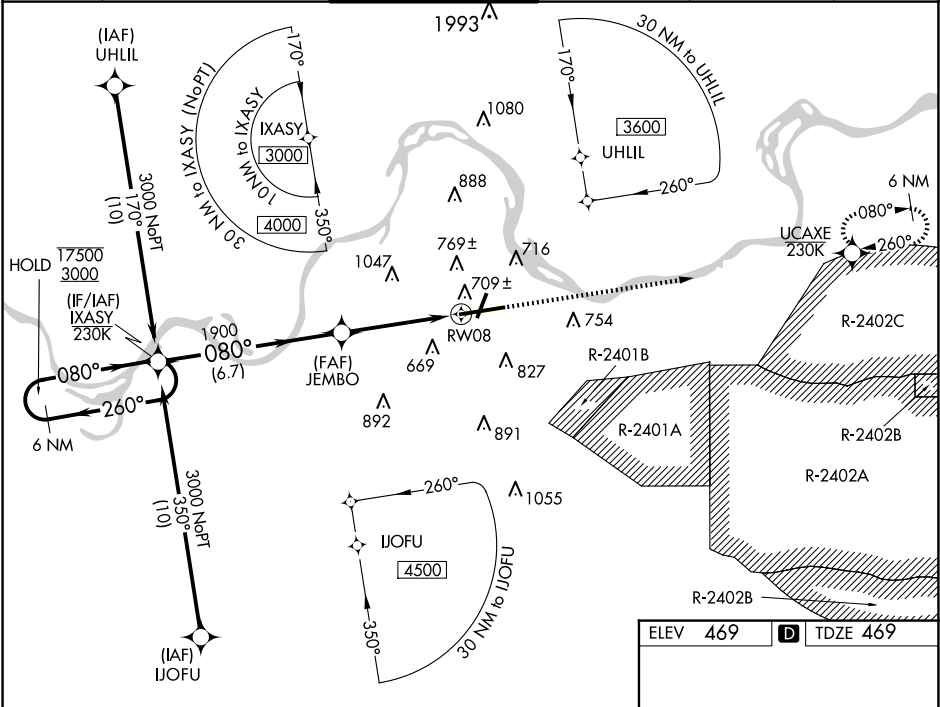
Circling NA for Cat E northwest of Rwy 8 and 20. Circling Rwy 20, 26 NA at night.
For uncompensated Baro-VNAV systems, LNAV/VNAV NA below -1.1°C or above 54°C.
For inop ALS, increase LPV Cat E visibility to ¾ SM, LNAV/VNAV all Cats visibility to 1¾ SM and LNAV Cat C/D/E visibility to 1¾ SM. Circling NA for Cat E when restricted area R-2401B active.

MALSR

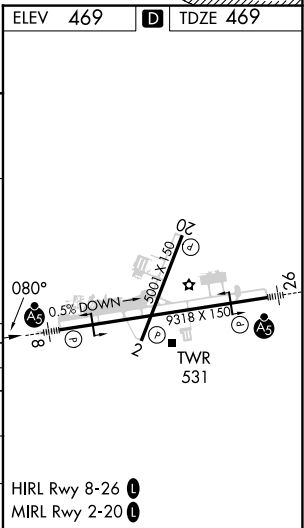
AS

MISSED APPROACH:
Climb to 3000 direct
UCAXE and hold.

ATIS 124.775	RAZORBACK APP CON ★ 120.9 343.75	FORT SMITH TOWER ★ 118.3 (CTAF) 0 323.175	GND CON 121.9 275.8	CLNC DEL 133.85 278.3	UNICOM 122.95
------------------------	--	---	-------------------------------	---------------------------------	-------------------------



CATEGORY	A	B	C	D	E
LPV DA			669-½	200 (200-½)	
LNAV/VNAV DA			945-1	476 (500-1)	
LNAV MDA	960-½	491 (500-½)		960-1	491 (500-1)
CIRCLING	1140-1	671 (700-1)	1400-2¾ 931 (1000-2¾)	1400-3	931 (1000-3)



SC-1, 10 JUL 2025 to 07 AUG 2025

SC-1, 10 JUL 2025 to 07 AUG 2025