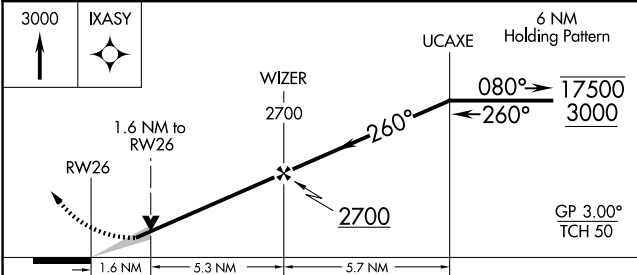
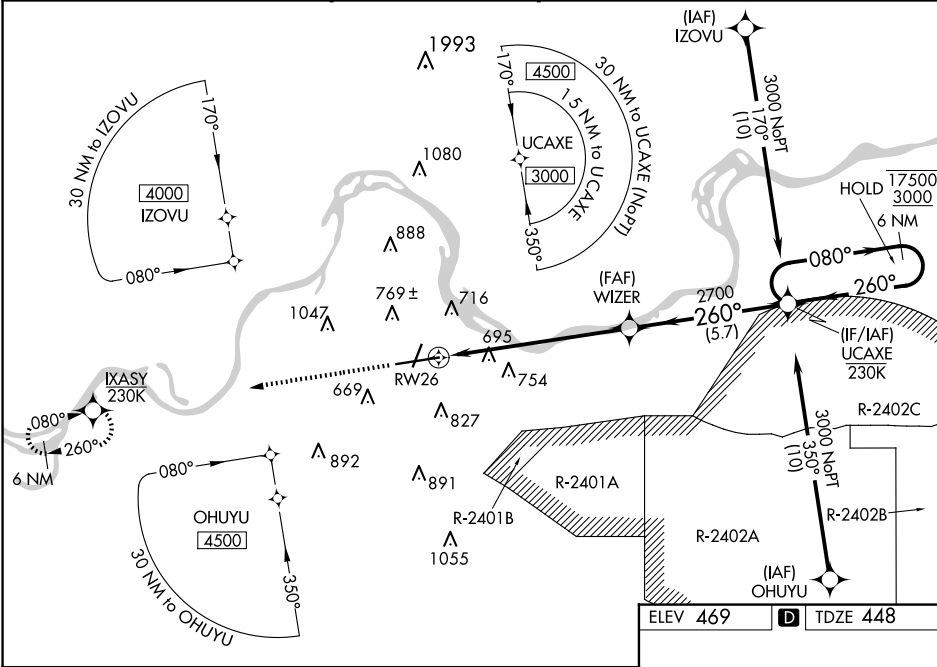


WAAS CH <b>87117</b> <b>W26A</b>	APP CRS <b>260°</b>	Rwy Idg TDZE Apt Elev	<b>9318</b> <b>448</b> <b>469</b>
--	------------------------	-----------------------------	---

RNAV (GPS) RWY 26  
FORT SMITH RGNL (F'SM)

RNP APCH - GPS.				<div>MALSR</div> <div><div><div></div><div></div></div><div><div></div><div></div></div></div>	<div>MISSED APPROACH:</div> <div>Climb to 3000 direct IXASY and hold.</div>
<div><div><div></div><div></div></div><div><div></div><div></div></div></div> <div>ASR</div>	<div>Circling NA for Cat E northwest of Rwy 8 and 20. Circling Rwy 20, 26 NA at night. For uncompensated Baro-VNAV systems, LNAV/VNAV NA below -11°C or above 54°C. Circling NA for Cat E NA when R-2401B active. For inop ALS, increase LPV Cat E visibility to RVR 4000, LNAV/VNAV all Cat's visibility to 1½ SM, and LNAV Cat E visibility to 1½ SM. *RVR 1800 authorized with use of FD or AP or HUD to DA.</div>				
ATIS	RAZORBACK APP CON ★	FORT SMITH TOWER ★	GND CON	CLNC DEL	UNICOM
124.775	120.9 343.75	118.3(CTAF) 323.175	121.9 275.8	133.85 278.3	122.95



CATEGORY	A	B	C	D	E
LPV DA *	648/24		200 (200-½)		
LNAV/VNAV DA	962/55		514 (500-1)		
LNAV MDA	1000/24	552 (600-½)	1000/60	552 (600-1¼)	
CIRCLING	1140-1	671 (700-1)	1400-2¾ 931 (1000-2¾)	1400-3	931 (1000-3)

