

HI-VOR Y or TACAN Y RWY 26

VORTAC FSM 110.4 Chan 41	APCH CRS 225°	Rwy Idg TDZE Arpt Elev 9317 448 469
--------------------------------	------------------	--

[USAF]

FORT SMITH RGNL (EBBING FLD ANGB) (KFMS)

DME required



MISSED APPROACH: Climb to 4000 on FSM
VORTAC R-232 to SPIRO (FSM R-232/15 DME)
and hold, continue climb in hold to 4000.

*Circling not authorized for CAT E NW of Rwy 8
and Rwy 20.

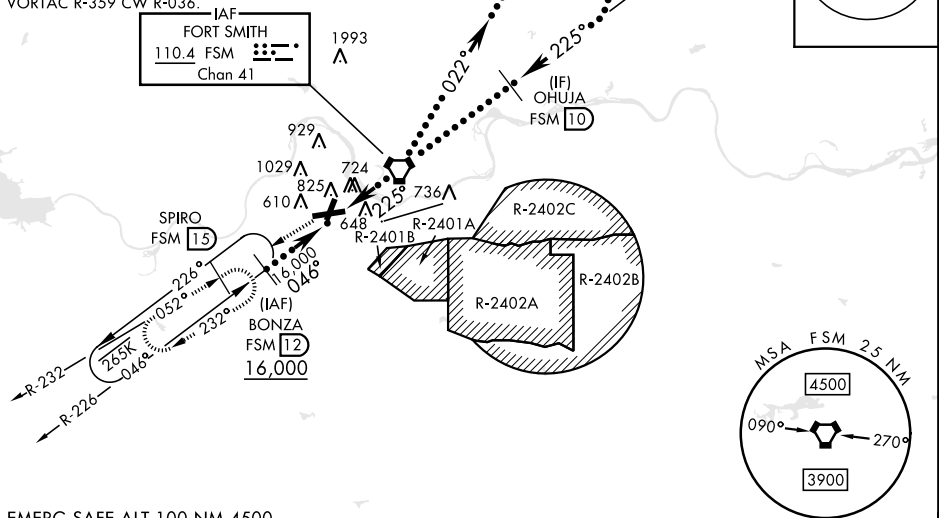
ATIS 124.775	RAZORBACK APP CON * 120.9 343.75	TOWER * 118.3 (CTAF) 323.175	GND CON 121.9 275.8	CLNC DEL 133.85 278.3	ASR
-----------------	-------------------------------------	---------------------------------	------------------------	--------------------------	-----

Straight-In Rwy 26 not authorized at night.

Circling to Rwy 20 or Rwy 26 not authorized at night.

Rwy 26 Helicopter visibility reduction below 1 mile
not authorized.

Procedure not authorized for arrival on FSM
VORTAC R-359 CW R-036.



EMERG SAFE ALT 100 NM 4500

			4000 ↑ FSM R-232	SPIRO FSM 15	ELEV 469 D TDZE 448
			Rwy 02 Idg 5001' Rwy 20 Idg 5001'		
			618 Λ		
CATEGORY	C	D	E		
S-26	980-1½	532 (600-1½)			
CIRCLING *	1400-2¾ 931 (1000-2¾)	1400-3 931 (1000-3)	1400-3 931 (1000-3)	HIRL Rwy 8-26 0 MRL Rwy 2-20 0	

HI-VOR Y or TACAN Y RWY 26