

NEW ORLEANS, LOUISIANA

25135

VOR/DME or TACAN Z RWY 4

NEW ORLEANS NAS JRB
(ALVIN CALLENDER FLD) (KNBG)

VORTAC HRV 114.1 Chan 88	APCH CRS 046°	Rwy Idg TDZE Arpt Elev 10,000 -2 2
--	-------------------------	--

[USN]

RNAV required

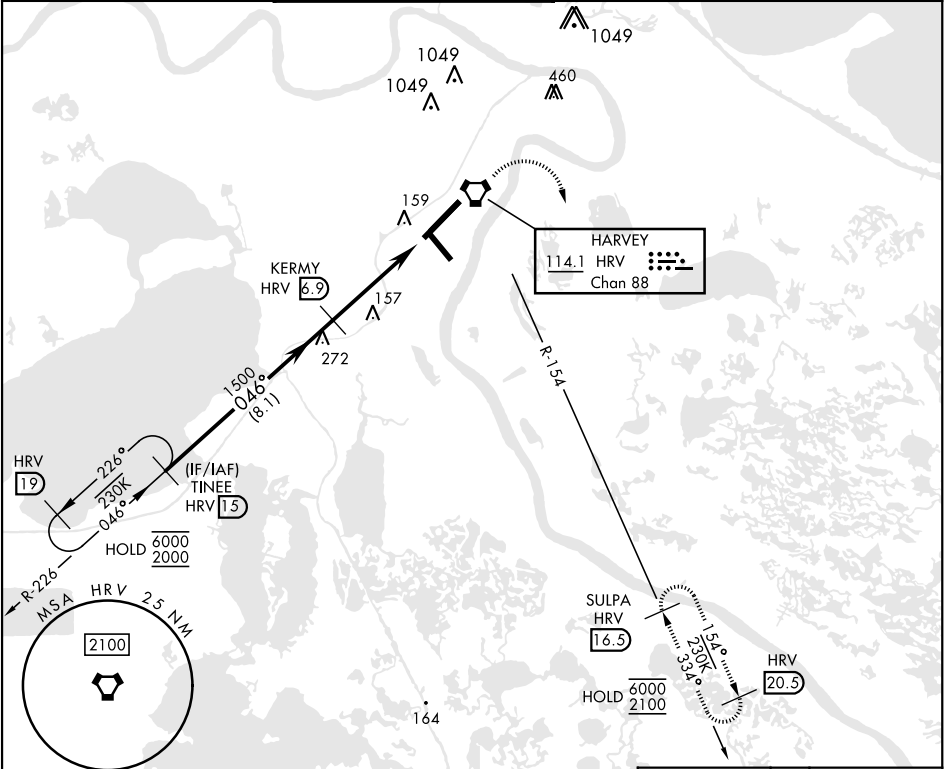
V * When ALS inop, increase CAT AB vis to 1 mile;
CAT CD vis to 1¾ miles.

ALSF-1



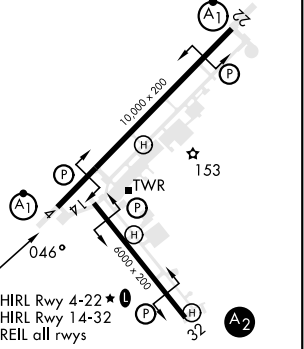
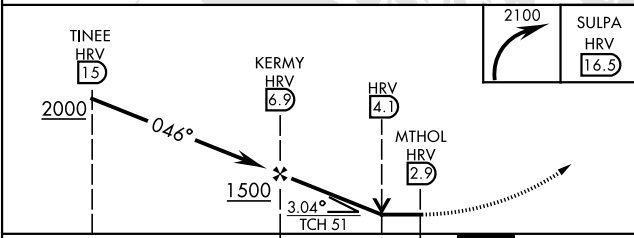
MISSED APPROACH: Climbing right turn to 2100
direct SULPA and hold.

ATIS ★ 279.55	APP CON 123.85 256.9	NAVY NEW ORLEANS TOWER ★ 0 123.8 340.2 (CTAF)	GND CON 121.6 270.35	CLNC DEL 128.35 263.0	ASR/ PAR
-------------------------	--------------------------------	---	--------------------------------	---------------------------------	-------------



EMERG SAFE ALT 100 NM 3000

ELEV	2	TDZE	-2
------	---	------	----



CATEGORY	A	B	C	D
S-4 *	600-½ 602 (600-½)	600-1¾ 602 (600-1¾)	640-1¾ 638 (700-1¾)	660-2 658 (700-2)
CIRCLING	640-1 638 (700-1)			

HIRL Rwy 4-22 ★
HIRL Rwy 14-32
REIL all rwys

NEW ORLEANS, LOUISIANA

29° 50' N-90° 02' W

NEW ORLEANS NAS JRB (KNBG)

Amtd 1 20MAR25

VOR/DME or TACAN Z RWY 4

SC-4, 10 JUL 2025 to 07 AUG 2025

SC-4, 10 JUL 2025 to 07 AUG 2025