

NEW ORLEANS, LOUISIANA

VOR/DME or TACAN Z RWY 22

VORTAC HRV  
**114.1**  
Chan 88

APCH CRS  
**237°**

Rwy Idg	10,000
TDZE	0
Arpt Elev	2

[USN]

NEW ORLEANS NAS JRB  
(ALVIN CALLENDER FLD) (KNBG)

RNAV required

**T** \* When ALS inop, increase CAT AB vis to 1 mile, CAT CD vis to 1 $\frac{3}{8}$  miles.

ALSF-1



**MISSED APPROACH:** Climb to 2000 on HVR R-226 to TINEE and hold.

ATIS ★  
279.55

APP CON  
123.85 256.9

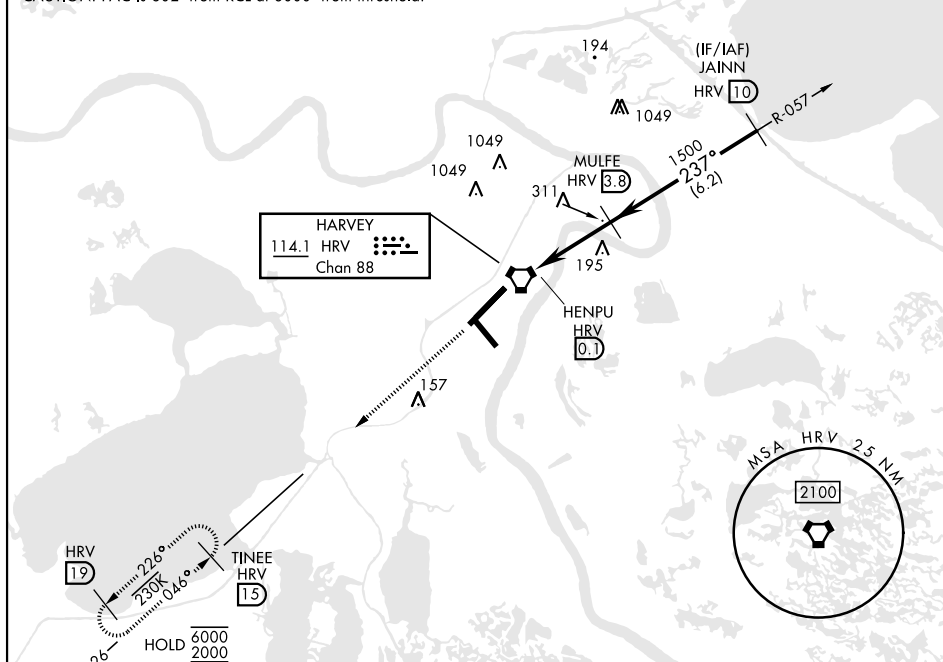
NAVY NEW ORLEANS TOWER ★  
**Q 123.8 340.2** (CTAF)

GND CON  
121.6 270.35

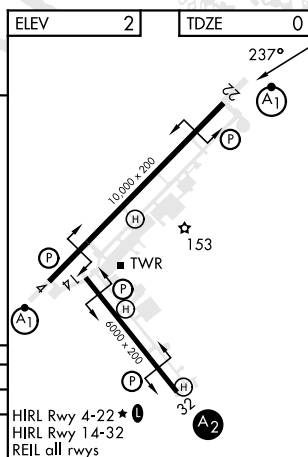
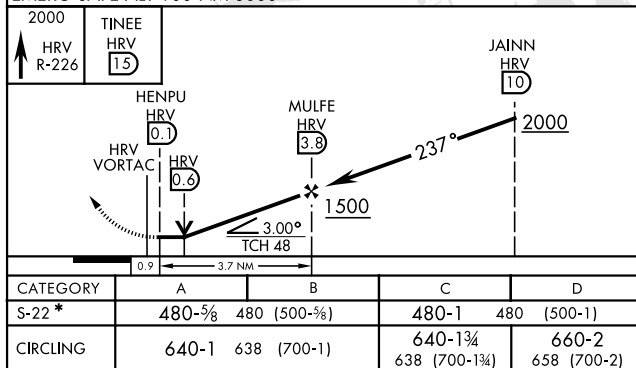
CLNC DEL  
**128.35 263.0**

ASR/  
PAR

CAUTION: FAC is 602' from RCL at 3000' from threshold.



EMERG SAFE ALT 100 NM 3000



NEW ORLEANS, LOUISIANA

29°50'N-90°02'W

NEW ORLEANS NAS JRB (KNBG)  
(ALVIN CALLENDER FLD)

Amdt 1 10JUL25

VOR/DME or TACAN Z RWY 22

SC-4, 10 JUL 2025 to 07 AUG 2025

SC-4, 10 JUL 2025 to 07 AUG 2025