

RNAV (GPS) RWY 4

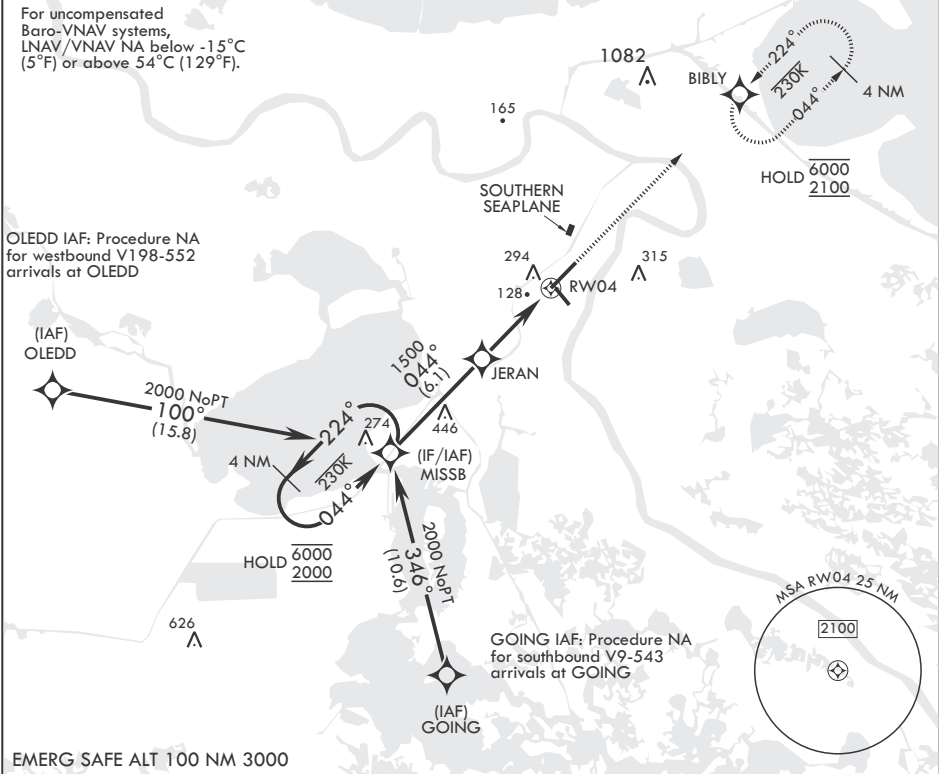
APCH CRS	Rwy ldg	10,000
044°	TDZE	-2
	Arprt Elev	2

- (USN)

NEW ORLEANS NAS JRB (ALVIN CALLENDER FLD) (KNBG)

RNP APCH-GPS	ALSF-1	MISSED APPROACH: Climb to 2100 direct BIBLY and hold.
* When ALS inop, increase vis to 1 1/8 miles. ** When ALS inop, increase CAT AB vis to 1 mile; CAT CD vis to 1 3/8 miles.		

ATIS★	APP CON/DEP CON	NAVY NEW ORLEANS TOWER★	GND CON	CLNC DEL	ASR/PAR
279.55	123.85 256.9	123.8 0★ 340.2 (CTAF)	121.6 270.35	128.35 263.0	



4 NM Holding Pattern	MISSB	2100	BIBLY	ELEV 2	TDZE -2
6000	224°	044°	044°		
2000					
GP 3.00°					
TCH 52					
		JERAN	1.3 NM to RW04	RW04	
		1500			
			4.6 NM		
CATEGORY	A	B	C	D	
LNAV/VNAV DA*	410-¾	412	(500-¾)		
LNAV MDA**	460-½	462 (500-½)	460-1	462 (500-1)	
CIRCLING	640-1	638 (700-1)	640-1¾ 638 (700-1¾)	660-2 658 (700-2)	

RNAV (GPS) RWY 4

SC-4, 10 JUL 2025 to 07 AUG 2025

SC-4, 10 JUL 2025 to 07 AUG 2025