

NEW ORLEANS, LOUISIANA

WAAS CH <b>60141</b> <b>W22A</b>	APCH CRS <b>224°</b>	Rwy ldg TDZE Arpt Elev	<b>10,000</b> <b>0</b> <b>2</b>
--	-------------------------	------------------------------	---------------------------------------

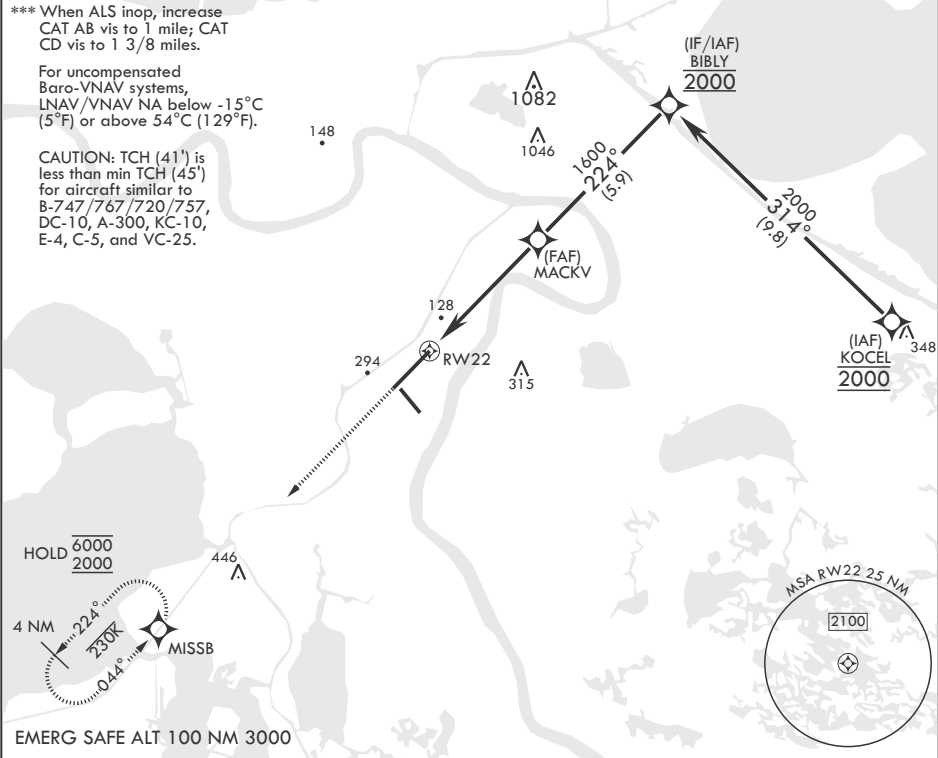
RNP APCH-GPS
<b>▲</b> * When ALS inop, increase vis to 3/4 mile. ** When ALS inop, increase vis to 1 1/8 miles.

- (USN)  
NEW ORLEANS NAS JRB (ALVIN CALLENDER FLD) (KNBG)

ALSIF-1	MISSED APPROACH: Climbing left turn to 2000 direct MISSB and hold.
---------	--

ATIS★ <b>279.55</b>	APP CON/DEP CON <b>123.85 256.9</b>	NAVY NEW ORLEANS TOWER★ <b>123.8 0★ 340.2</b> (CTAF)	GND CON <b>121.6 270.35</b>	CLNC DEL <b>128.35 263.0</b>	ASR/PAR
------------------------	--	---	--------------------------------	---------------------------------	---------

\*\*\* When ALS inop, increase CAT AB vis to 1 mile; CAT CD vis to 1 3/8 miles.  
For uncompensated Baro-VNAV systems, LNAV/VNAV NA below -15°C (5°F) or above 54°C (129°F).  
CAUTION: TCH (41') is less than min TCH (45') for aircraft similar to B-747/767/720/757, DC-10, A-300, KC-10, E-4, C-5, and VC-25.



2000	MISSB	VGSI and RNAV glidepath not coincident (VGSI Angle 3.00/TCH 48)	BIBLY	KOCEL	ELEV 2	TDZE 0
↑	⊙		← 314°	← 224°	⊙	224°
			2000	2000		
			GP 3.00°	TCH 41		
			1.4 NM to RW22	1600		
			4.9 NM			
CATEGORY	A	B	C	D		
LPV DA*	200-1/2	200	(200-1/2)			
LNAV/VNAV DA**	409-3/4	409	(500-3/4)			
LNAV MDA***	480-1/2	480 (500-1/2)	480-1	480 (500-1)		
Ⓢ CIRCLING	640-1	638 (700-1)	640-1 3/4 638 (700-1 3/4)	660-2 658 (700-2)		
					HIRL Rwy 14-32 HIRL Rwy 4-22	
					REIL all Rwys	

NEW ORLEANS, LOUISIANA

29°50'N - 90°02'W NEW ORLEANS NAS JRB (ALVIN CALLENDER FLD) (KNBG)

Amtrd 4 20MAR25

RNAV (GPS) RWY 22

SC-4, 10 JUL 2025 to 07 AUG 2025

SC-4, 10 JUL 2025 to 07 AUG 2025