

NEW ORLEANS, LOUISIANA

RNAV (GPS) RWY 14

APCH CRS 140°	Rwy Idg TDZE Arpt Elev	6000 2 2
------------------	------------------------------	----------------

- (USN)

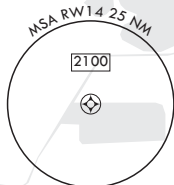
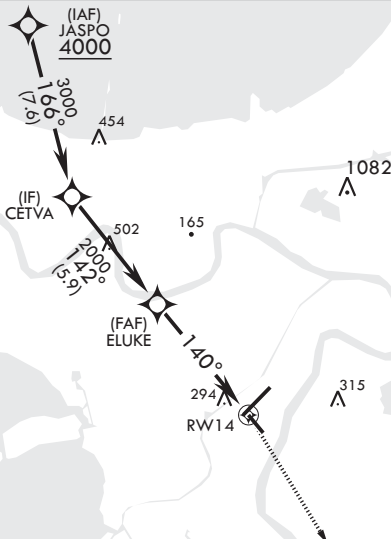
NEW ORLEANS NAS JRB (ALVIN CALLENDER FLD) (KNBG)

RNP APCH-GPS

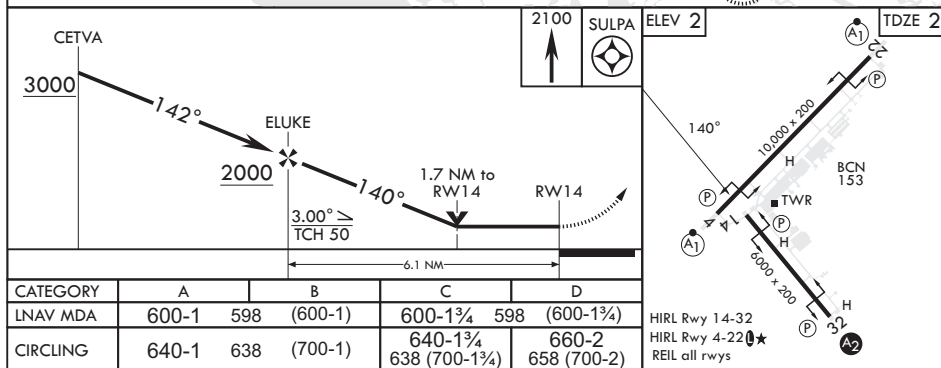
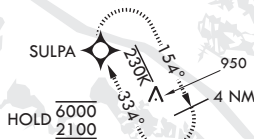
MISSED APPROACH: Climbing right turn to 2100 direct SULPA and hold.

ATIS★ 279.55	APP CON/DEP CON 123.85 256.9	NAVY NEW ORLEANS TOWER★ 123.8 0 340.2 (CTAF)	GND CON 121.6 270.35	CLNC DEL 128.35 263.0	ASR/PAR
-----------------	---------------------------------	---	-------------------------	--------------------------	---------

Rwy 14 helicopter
visibility reduction below
3/4 mile not authorized.



EMERG SAFE ALT 100 NM 3000



NEW ORLEANS, LOUISIANA

29°50'N - 90°02'W NEW ORLEANS NAS JRB (ALVIN CALLENDER FLD) (KNBG)

Amdt 3 10JUL25

RNAV (GPS) RWY 14