

LOC I-NBG <b>109.5</b>	APCH CRS <b>044°</b>	Rwy ldg TDZE Arpt Elev <b>10,000</b> <b>-2</b> <b>2</b>
---------------------------	-------------------------	--

[USN]

ILS or LOC/DME RWY 4

NEW ORLEANS NAS JRB  
(ALVIN CALLENDER FLD) (KNBG)

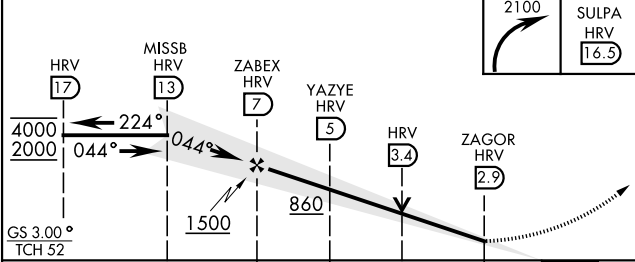
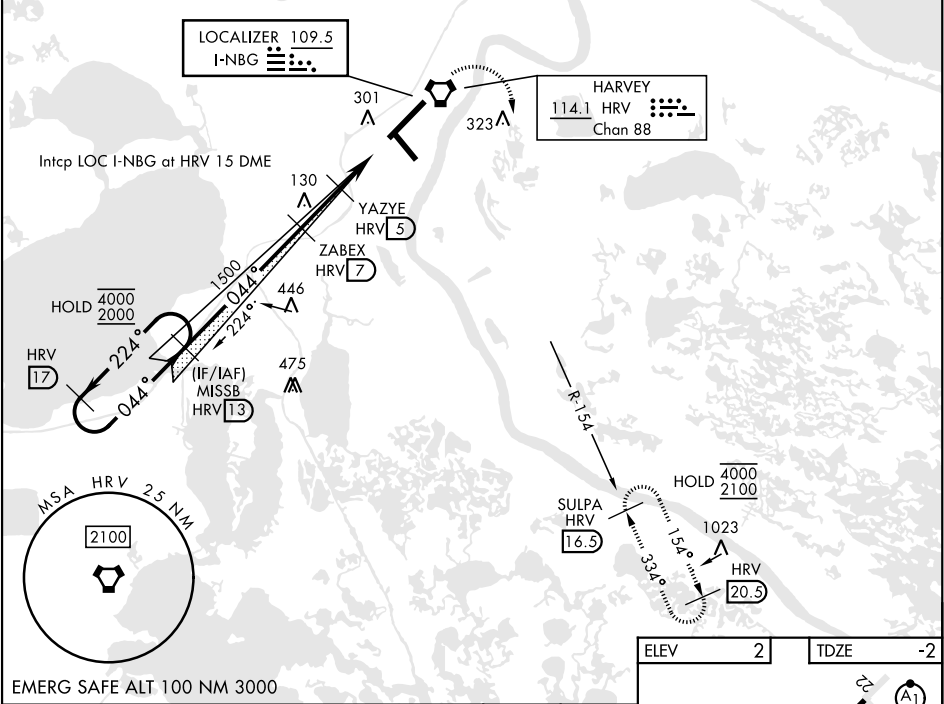
RNAV required

- \* When ALS inop, increase vis to ¾ mile.
- \*\* When ALS inop, increase CAT AB vis to 1 mile;  
CAT CDE vis to 1½ miles.
- \*\*\* Circling not authorized for CAT E NW of Rwy 4-22.

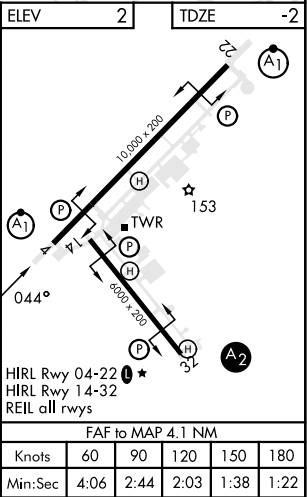


MISSED APPROACH: Climbing right turn to 2100  
direct SULPA and hold.

ATIS ★ <b>279.55</b>	APP CON <b>123.85 256.9</b>	NAVY NEW ORLEANS TOWER ★ <b>0 123.8 340.2 (CTAF)</b>	GND CON <b>121.6 270.35</b>	CLNC DEL <b>128.35 263.0</b>	ASR/ PAR
-------------------------	--------------------------------	---	--------------------------------	---------------------------------	-------------



CATEGORY	A	B	C	D	E
S-ILS 4 *	198-½		200	(200-½)	
S-LOC 4 **	380-½	382 (400-½)	380-⅝	382	(400-⅝)
CIRCLING ***	640-1	638 (700-1)	640-1¾ 638 (700-1¾)	660-2 658 (700-2)	680-2½ 678 (700-2½)



ILS or LOC/DME RWY 4

SC-4, 10 JUL 2025 to 07 AUG 2025

SC-4, 10 JUL 2025 to 07 AUG 2025