

NEW ORLEANS, LOUISIANA

HI-TACAN Y RWY 22

VORTAC HRV <b>114.1</b> Chgn <b>88</b>	APCH CRS <b>237°</b>	Rwy Idg <b>10,000</b> TDZE <b>0</b> Arpt Elev <b>2</b>
--	-------------------------	--

[USN]

NEW ORLEANS NAS JRB (ALVIN CALLENDER FLD) (KNBG)

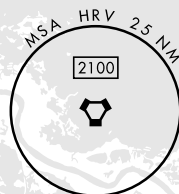
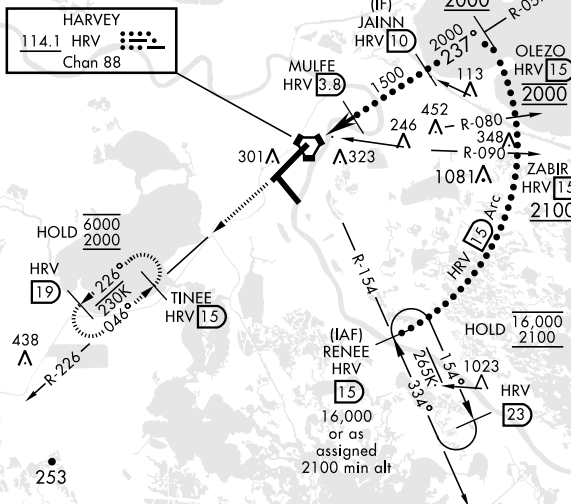
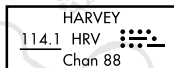
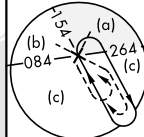
RNAV required

ALSF-1

**MISSED APPROACH:** Climb to 2000 direct TINEE and hold

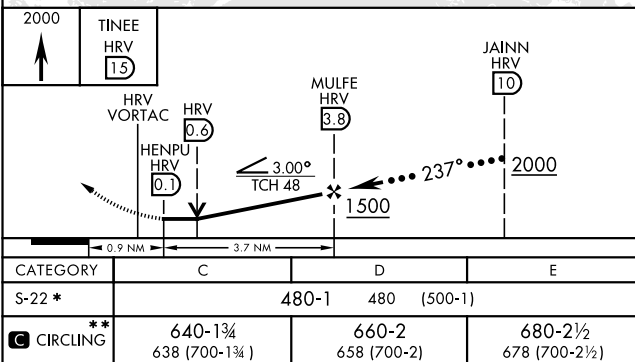
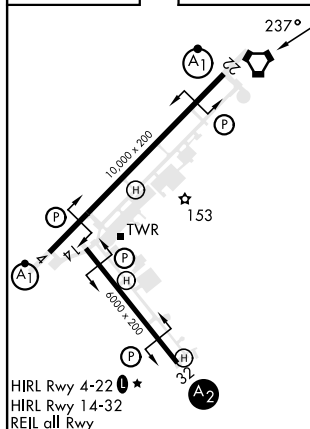
ATIS ★ 279.55	APP CON 123.85 256.9	NAVY NEW ORLEANS TOWER ★ 0 123.8 340.2 (CTAF)	GND CON 121.6 270.35	CLNC DEL 128.35 263.0	ASR/ PAR
------------------	-------------------------	--	-------------------------	--------------------------	-------------

CAUTION: FAC is 611' from RCL at 3000' from thld.



EMERG SAFE ALT 100 NM 3000

ELEV	2		TDZE	0
------	---	--	------	---



NEW ORLEANS, LOUISIANA

29°50'N-90°02'W

NEW ORLEANS NAS JRB (ALVIN CALLENDER FLD) (KNBG)

Amdt 1 20MAR25

HI-TACAN Y RWY 22