

PADUCAH, KENTUCKY

AL-628 (FAA)

25163

| | | |
|--|------------------------|---|
| WAAS CH 93701 W05A | APP CRS 045° | Rwy Ldg 6500 TDZE 411 Apt Elev 411 |
|--|------------------------|---|

RNAV (GPS) RWY 5
BARKLEY RGNL (PAH)

RNP APCH.

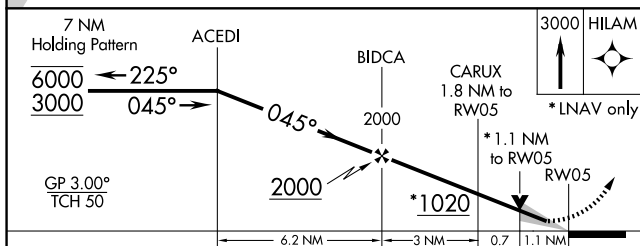
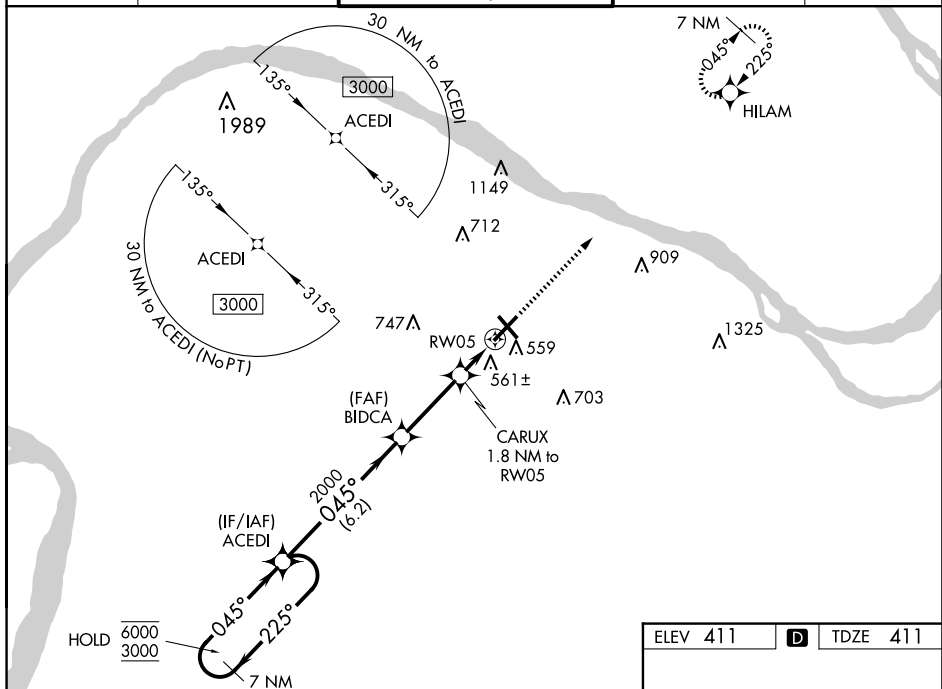
T For uncompensated Baro-VNAV systems, LNAV/VNAV NA below -15°C or above 54°C.
A For inop ALS, increase LNAV Cat C/D visibility to 1½ SM.


MALSR

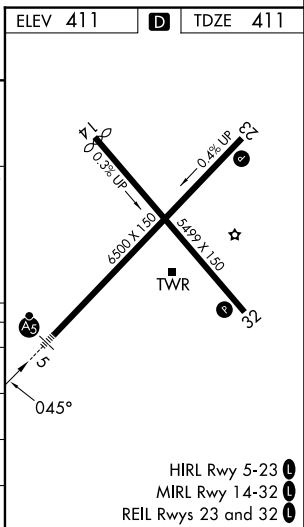


MISSED APPROACH:
Climb to 3000 direct
HILAM and hold.

| | | | | |
|-----------------|---------------------------------|---|------------------------|------------------|
| ASOS 118.375 | MEMPHIS CENTER 133.65 292.15 | PADUCAH TOWER ★ 119.6 (CTAF) 0 306.9 | GND CON 121.7 306.9 | UNICOM 122.95 |
|-----------------|---------------------------------|---|------------------------|------------------|



| CATEGORY | A | B | C | D |
|--|--|-------------|---|--|
| LPV DA | 611- $\frac{1}{2}$ 200 (200- $\frac{1}{2}$) | | | |
| LNAV/ VNAV DA | 837- $\frac{3}{4}$ 426 (500- $\frac{3}{4}$) | | | |
| LNAV MDA | 820- $\frac{1}{2}$ 409 (500- $\frac{1}{2}$) | | 820- $\frac{3}{4}$ 409 (500- $\frac{3}{4}$) | |
|  CIRCLING | 900-1 | 489 (500-1) | 920-1 $\frac{1}{2}$ 509 (600-1 $\frac{1}{2}$) | 1100-2 $\frac{1}{4}$ 689 (700-2 $\frac{1}{4}$) |



PADUCAH, KENTUCKY

Amdt 2 25FEB21

37°04'N-88°46'W

BARKLEY RGNL (PAH)

MIRL Rwy 14-32 L

L Rwys 23 and 32 L

MEMORANDUM FOR THE DIRECTOR, FBI

RNAV (GPS) RWY 5

SE-1, 10 JUL 2025 to 07 AUG 2025