

LOC I-PAH	APP CRS	Rwy Ldg	6500
108.5	045°	TDZE	411
		Apt Elev	411

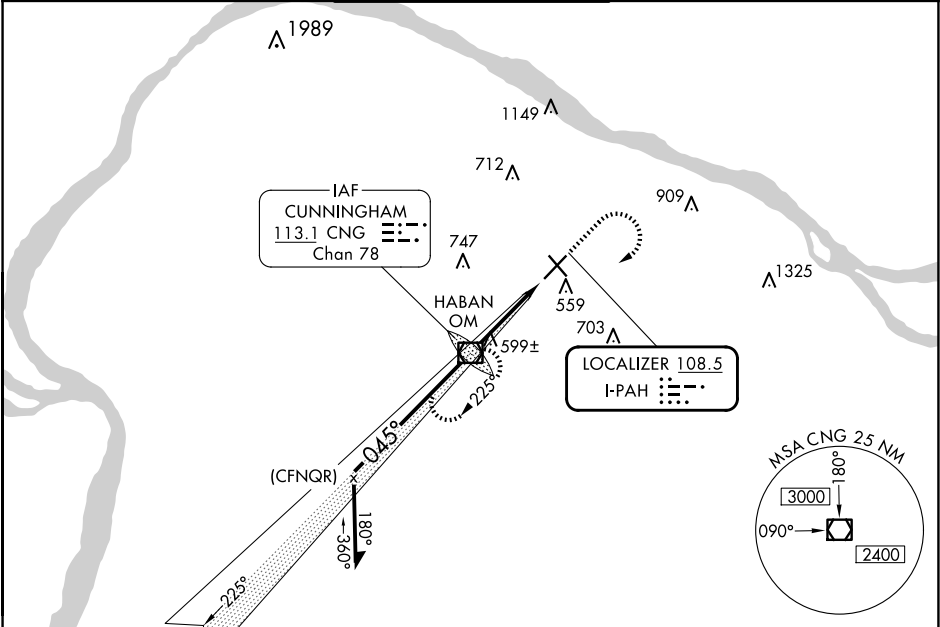
ILS or LOC RWY 5
BARKLEY RGNL (PAH)

⚠ When local altimeter setting not received, use Mayfield altimeter setting and increase DA to 672, and all MDA 80 feet. Increase S-LOC 5 Cat C, D visibility 1/8 SM. For inop ALS when using Mayfield altimeter setting, increase S-ILS 5 visibility to 1/8 SM, all Cats.

MALSR

MISSED APPROACH: Climb to 1100 then climbing right turn to 2100 direct CNG VOR/DME and hold.

ASOS 118.375	MEMPHIS CENTER 133.65 292.15	PADUCAH TOWER ★ 119.6 (CTAF) 306.9	GND CON 121.7 306.9	UNICOM 122.95
-----------------	---------------------------------	---------------------------------------	------------------------	------------------



Remain within 10 NM

2100

GS 2.98° TCH 56

1700

1673

225°

045°

045°

3.8 NM

CNG VOR/DME HABAN OM

1100

2100

CNG

ELEV 411 TDZE 411

4.0 0.3% UP

0.4% UP

6500 X 150

5499 X 150

TWR

045°

HIRL Rwy 5-23

MIRL Rwy 14-32

REIL Rwy 23 and 32

FAF to MAP 3.8 NM

Knots	60	90	120	150	180
Min:Sec	3:48	2:32	1:54	1:31	1:16

CATEGORY	A	B	C	D
S-ILS 5	611-1/2 200 (200-1/2)			
S-LOC 5	860-1/2	449 (500-1/2)	860-7/8	449 (500-7/8)
CIRCLING	900-1	489 (500-1)	920-1 1/2 509 (600-1 1/2)	1100-2 1/4 689 (700-2 1/4)

SE-1, 10 JUL 2025 to 07 AUG 2025

SE-1, 10 JUL 2025 to 07 AUG 2025