

WAAS CH 86612 W29A	APP CRS 293°	Rwy Ldg 7011 TDZE 128 Apt Elev 132
--	------------------------	---

RNAV (GPS) Z RWY 29

LAURENCE G HANSCOM FLD (BED)

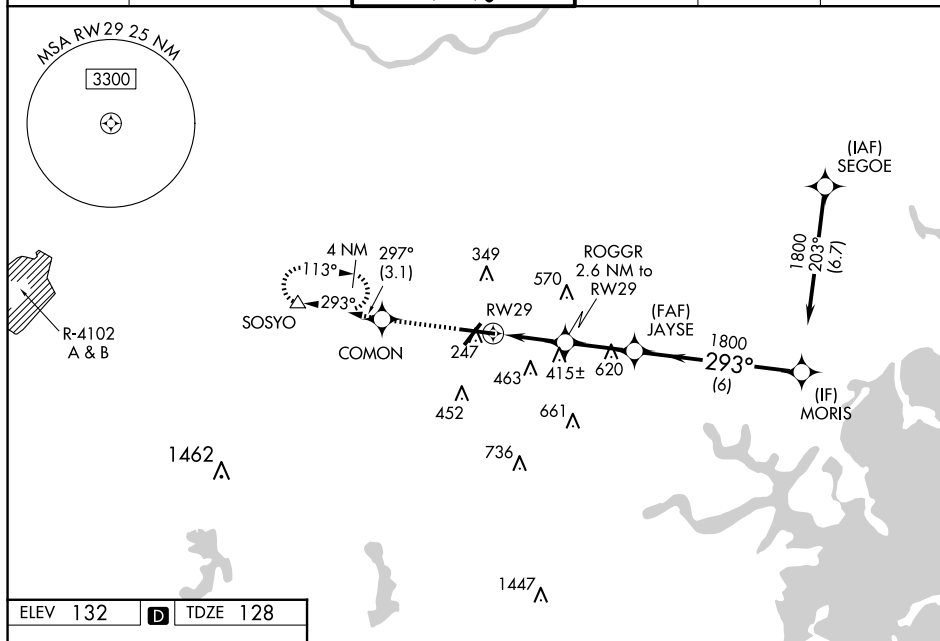
RNP APCH

▼ For uncompensated Baro-VNAV systems, LNAV/VNAV NA below -16°C (4°F) or above 54°C (130°F), Baro-VNAV and VDP NA with Boston altimeter setting. When local altimeter setting not received, use Boston altimeter setting: increase LPV DA to 377 feet, LNAV/VNAV DA to 663 feet; increase all MDAs 60 feet and LNAV Cats C and D, and Circling Cat D visibility $\frac{1}{4}$ SM. For inop ALS, increase LNAV/VNAV all Cats visibility and LNAV Cat C/D to 1 SM. For inop ALS when using Boston altimeter setting, increase LNAV/VNAV all Cats visibility to $1\frac{1}{2}$ SM and LNAV Cat C/D to 1 SM.

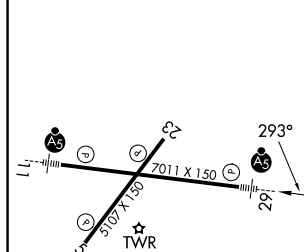
MALSI

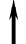


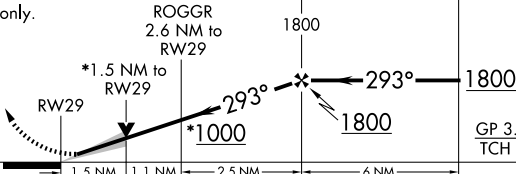

MISSED APPROACH:
Climb to 2000 direct
COMON and on
track 297° to SOSYO
and hold.

ATIS 124.6	BOSTON APP CON 124.4 279.6	HANSCOM TOWER ★ 118.5 (CTAF) 0 257.2	GND CON 121.7	CLNC DEL 121.85	UNICOM 122.95
---------------	-------------------------------	---	------------------	--------------------	------------------



ELEV 132	D	TDZE 128
----------	----------	----------



2000	COMON	SOSOY			
		tr 297°			
*LNAV only.					
					
CATEGORY	A	B	C	D	
LPV DA	328-1/2		200 (200-1/2)		
LNAV/ VNAV DA	614-1 1/8		486 (500-1 1/8)		
LNAV MDA	640-1/2	512 (600-1/2)	640-1	512 (600-1)	
 CIRCLING	720-1	588 (600-1)	880-2 1/4 748 (800-2 1/4)	920-2 1/2 788 (800-2 1/2)	