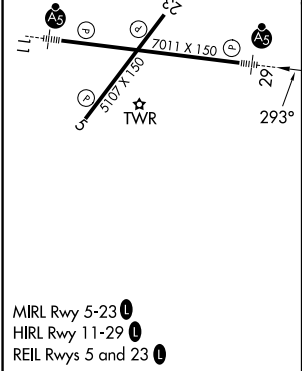
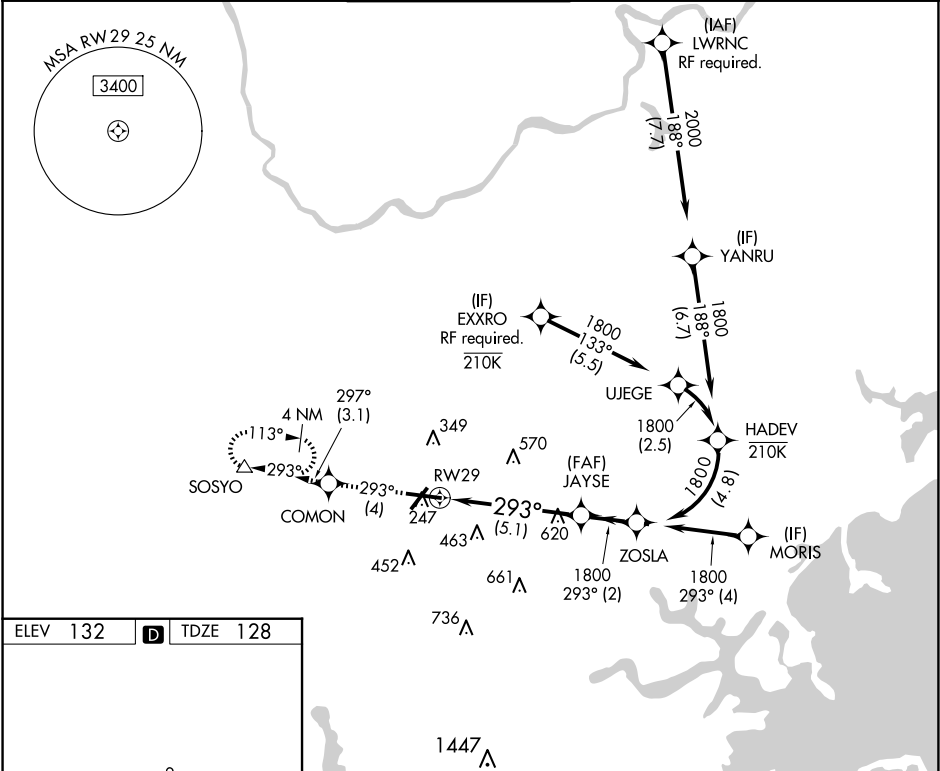


APP CRS	Rwy Ldg	7011
293°	TDZE	128
	Apt Elev	132

RNAV (RNP) Y RWY 29
LAURENCE G HANSCOM FLD (BED)

RNP AR APCH.	MALSR	MISSED APPROACH: Climb to 2000 on track 293° to COMON then on track 297° to SOSYO and hold.
For uncompensated Baro-VNAV systems, procedure NA below -19°C or above 54°C.		

ATIS 124.6	BOSTON APP CON 124.4 279.6	HANSCOM TOWER★ 118.5 (CTAF) 0 257.2	GND CON 121.7	CLNC DEL 121.85	UNICOM 122.95
---------------	-------------------------------	--	------------------	--------------------	------------------



2000	tr 293°	COMON	tr 297°	SOSYO	See planview for multiple IF locations.
				JAYSE	ZOSLA
				1800	1800
				293°	1800
				1800	
				5.1 NM	2 NM
CATEGORY	A	B	C	D	
RNP 0.30 DA	651-1 523 (600-1)				
AUTHORIZATION REQUIRED					

NE-1, 10 JUL 2025 to 07 AUG 2025

NE-1, 10 JUL 2025 to 07 AUG 2025