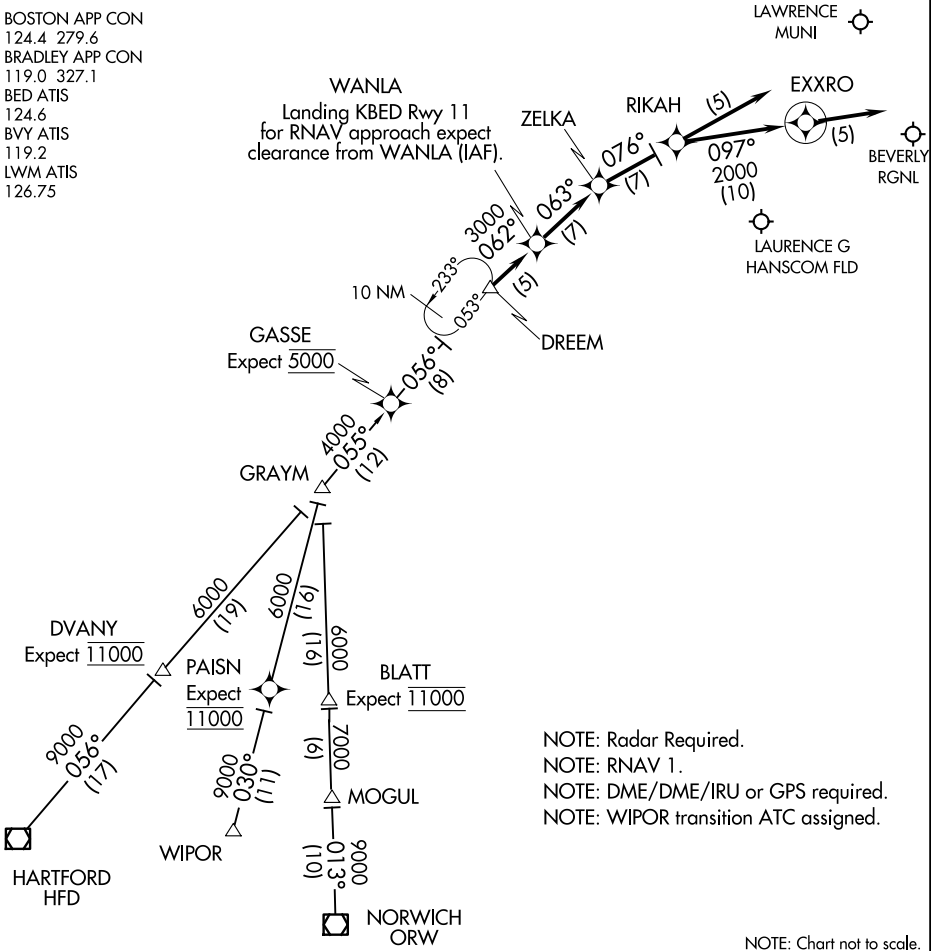


BOSTON APP CON  
124.4 279.6  
BRADLEY APP CON  
119.0 327.1  
BED ATIS  
124.6  
BVY ATIS  
119.2  
LWM ATIS  
126.75



HARTFORD TRANSITION (HFD.DREEM2):  
NORWICH TRANSITION (ORW.DREEM2):  
WIPOR TRANSITION (WIPOR.DREEM2):

LANDING BVY ALL RWYS, BED RWY 23 & 29: From DREEM on track 062° to WANLA , then on track 063° to ZELKA, then on track 076° to RIKAH, then on track 097° to EXXRO, then on track 097°. Expect radar vectors to destination airport and final approach course.

LANDING BED RWY 11: From DREEM on track 062° to WANLA, then on track 063° to ZELKA. Expect ILS approach.

LANDING LWM ALL RWYS: From DREEM on track 062° to WANLA, then on track 063° to ZELKA, then on track 076° to RIKAH, then on track 076°, expect radar vectors to final approach course.