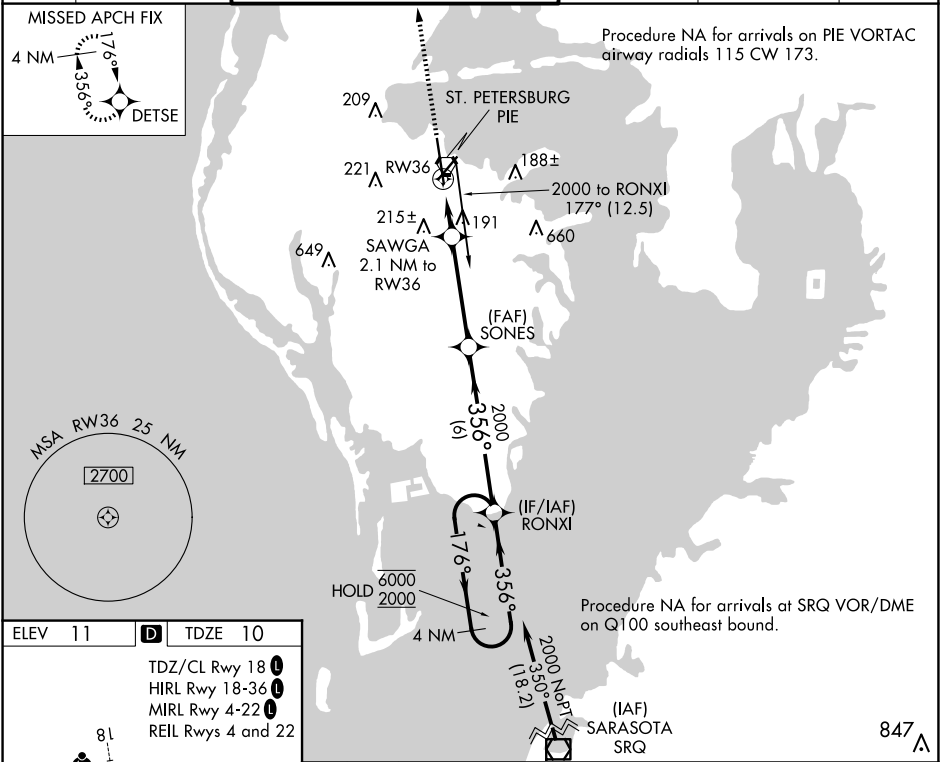


WAAS CH <b>65739</b> <b>W36A</b>	APP CRS <b>356°</b>	Rwy Idg <b>8720</b> TDZE <b>10</b> Apt Elev <b>11</b>
--	------------------------	---

RNAV (GPS) RWY 36  
ST PETE-CLEARWATER INTL (PIE)

RNP APCH - GPS		MISSED APPROACH: Climb to 2600 direct DETSE and hold.	
<div><div></div><div></div></div> <p>Circling to Rwy 22 NA at night. For uncompensated Baro-VNAV systems, LNAV/VNAV NA below 3°C or above 54°C.</p>			

ATIS <b>134.5</b>	TAMPA APP CON <b>125.3 316.05</b>	ST PETERSBURG-CLEARWATER TOWER ★ <b>118.3 (CTAF) 0 257.8</b>	GND CON <b>121.9 348.6</b>	CLNC DEL <b>120.6 350.2</b>	UNICOM <b>122.95</b>
----------------------	--------------------------------------	---	-------------------------------	--------------------------------	-------------------------



ELEV 11	<b>D</b>	TDZE 10
TDZ/CL Rwy 18 <b>0</b> HIRL Rwy 18-36 <b>0</b> MIRL Rwy 4-22 <b>0</b> REIL Rwys 4 and 22		
<div><div>2600 DETSE</div><div>VGSI and RNAV glidepath not coincident (VGSI Angle 3.00°/TCH 76).</div><div>SAWGA 2.1 NM to RW36</div><div>SONES 2000</div><div>RONXI 4 NM Holding Pattern</div><div>1.2 NM to RW36</div><div>0.9</div><div>4 NM</div><div>6 NM</div><div>720</div><div>2000</div><div>356°</div><div>176°</div><div>6000</div><div>2000</div><div>GP 3.00°</div><div>TCH 55</div></div>		
CATEGORY	A	D
LPV DA	210/40	200 (200-¾)
LNAV/VNAV DA	315/45	305 (400-¾)
LNAV MDA	460/55 450 (500-1)	460-1½ 450 (500-1½)
<b>C</b> CIRCLING	520-1 509 (600-1)	600-1½ 589 (600-1½) 620-2 609 (700-2)

SE-3, 10 JUL 2025 to 07 AUG 2025

SE-3, 10 JUL 2025 to 07 AUG 2025