

LOC/DME I-PIE <u>109.1</u> Chan 28	APP CRS 176°	Rwy Idg 9180 TDZE 7 Apt Elev 11
--	------------------------	--

ILS or LOC RWY 18
ST PETE-CLEARWATER INTL (PIE)

DME, RADAR, or ADF required.

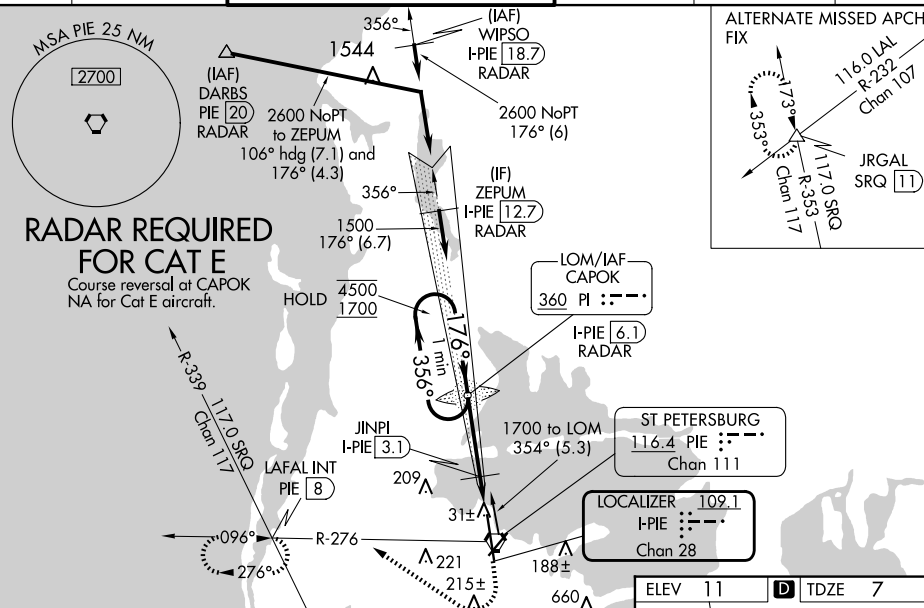
T Circling Rwy 22 NA at night. For inop ALS, increase S-ILS 18
A Cat E visibility to RVR 4000 and S-LOC 18 Cat E visibility to
1½ SM.
JINPI FIX MINIMUMS: For inop ALS, increase S-LOC 18
Cats C, D, and E visibility to RVR 4500.

MALSR



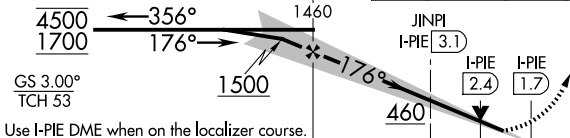
MISSED APPROACH: Climb to 600 then climbing right turn to 1700 on heading 330° and PIE VORTAC R-276 to LAFAL INT/PIE VORTAC 8 DME and hold, continue climb-in-hold to 1700.

ATIS 134.5	TAMPA APP CON 125.3 316.05	ST PETERSBURG-CLEARWATER TOWER★ 118.3 (CTAF) 0 257.8	GND CON 121.9 348.6	CLNC DEL 120.6 350.2	UNICOM 122.95
----------------------	--------------------------------------	--	-------------------------------	--------------------------------	-------------------------



VGSI and ILS glidepath not coincident (VGSI Angle 3.00/TCH 68).

One Minute Holding Pattern



Use I-PIE DME when on the localizer course.

				← 3 NM →		0.6 NM	0.7 NM	
CATEGORY	A		B		C	D		E
S-ILS 18	207/18 200 (200-½)							
S-LOC 18	460/24 453 (500-½)				460/45 453 (500-⅔)			
C CIRCLING	520-1	509 (600-1)		640-1 ³ / ₄ 629 (700-1 ³ / ₄)		680-2 669 (700-2)		960-3 949 (1000-3)
JINPI FIX MINIMUMS								
S-LOC 18	300/24 293 (300-½)							
C CIRCLING	520-1	509 (600-1)		640-1 ³ / ₄ 629 (700-1 ³ / ₄)		680-2 669 (700-2)		960-3 949 (1000-3)

