

LOC/DME I-PIE 109.1 Chan 28	APP CRS 176°	Rwy Idg 9180 TDZE 7 Apt Elev 11
-------------------------------------------------	------------------------	------------------------------------------------------------

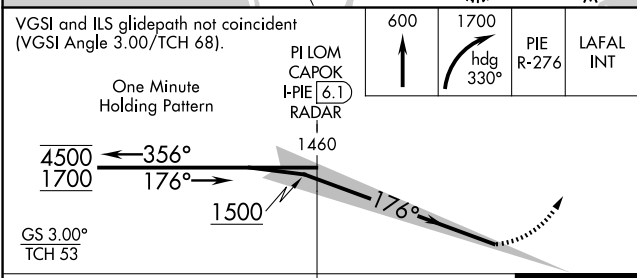
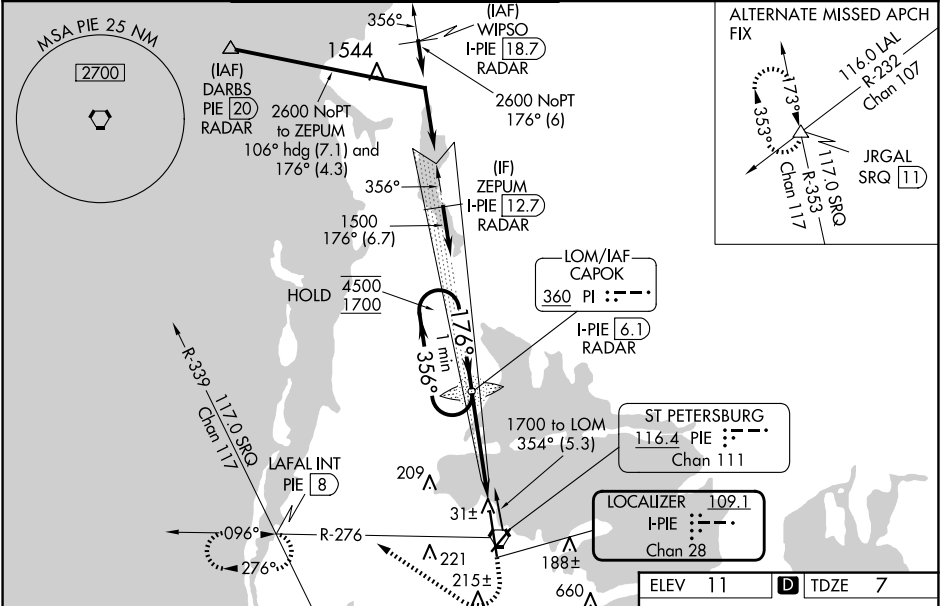
ILS RWY 18 (SA CAT I & II)
ST PETE-CLEARWATER INTL (PIE)

DME, RADAR, or ADF required.

MALSRR

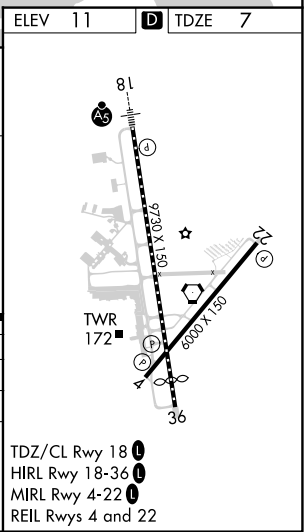
MISSED APPROACH: Climb to 600 then climbing right turn to 1700 on heading 330° and PIE VORTAC R-276 to LAFAL INT/PIE 8 DME and hold, continue climb-in-hold to 1700.

ATIS 134.5	TAMPA APP CON 125.3 316.05	ST PETERSBURG-CLEARWATER TOWER ★ 118.3 (CTAF) 0 257.8	GND CON 121.9 348.6	CLNC DEL 120.6 350.2	UNICOM 122.95
----------------------	--------------------------------------	-----------------------------------------------------------------	-------------------------------	--------------------------------	-------------------------



CATEGORY	A	B	C	D
S-ILS 18	SA CAT I	RA 157/14	150	DA 157
S-ILS 18	SA CAT II	RA 107/12	100	DA 107

SA CATEGORY I & II ILS - SPECIAL AIRCREW & AIRCRAFT CERTIFICATION REQUIRED



SE-3, 10 JUL 2025 to 07 AUG 2025

SE-3, 10 JUL 2025 to 07 AUG 2025