

TYLER, TEXAS

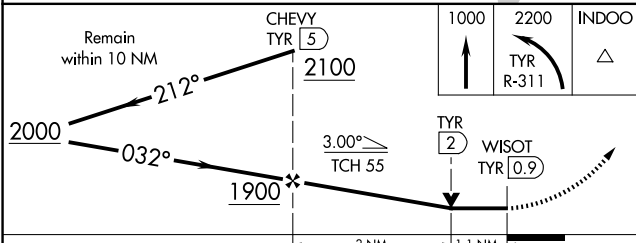
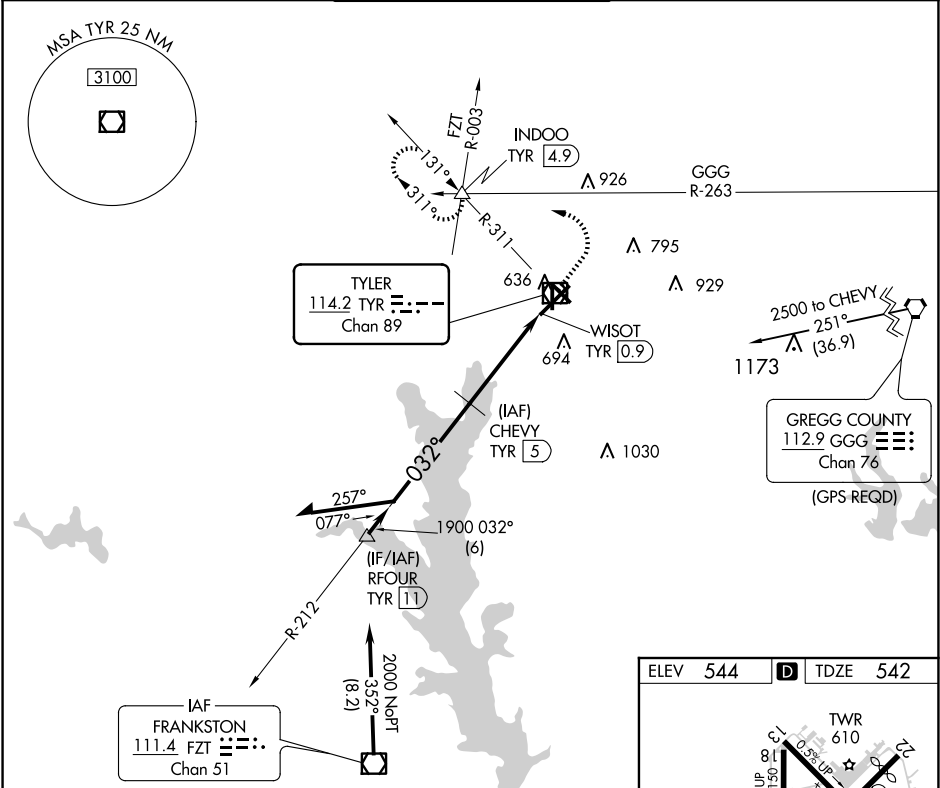
AL-622 (FAA)

23278

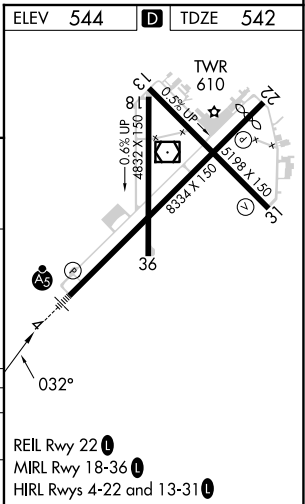
VOR/DME TYR	APP CRS	Rwy Idg	7734
114.2	032°	TDZE	542
Chan 89		Apt Elev	544

VOR RWY 4
TYLER POUNDS RGNL (TYR)

DME required. For inop ALS, increase Cat C/D visibility to 1 1/8 SM.		MALSR AS	MISSED APPROACH: Climb to 1000 then climbing left turn to 2200 on TYR VOR/DME R-311 to INDOO INT/TYR 4.9 DME and hold.	
ATIS 126.25	LONGVIEW APP CON ★ 128.75 379.15	POUNDS TOWER ★ 120.1 (CTAF) 257.8		GND CON 121.9
				UNICOM 122.95



CATEGORY	A	B	C	D
S-4	940-1/2 398 (400-1/2)		940-3/4 398 (400-3/4)	
CIRCLING	980-1 436 (500-1)	1020-1 476 (500-1)	1160-1 3/4 616 (700-1 3/4)	1280-2 1/4 736 (800-2 1/4)



TYLER, TEXAS
Amdt 5C 20APR23

32°21'N-95°24'W

TYLER POUNDS RGNL (TYR)
VOR RWY 4

SC-2, 10 JUL 2025 to 07 AUG 2025

SC-2, 10 JUL 2025 to 07 AUG 2025