

23278

WAAS CH 58337 W18A	APP CRS 177°	Rwy Idg 4832 TDZE 539 Apt Elev 544
--	------------------------	---

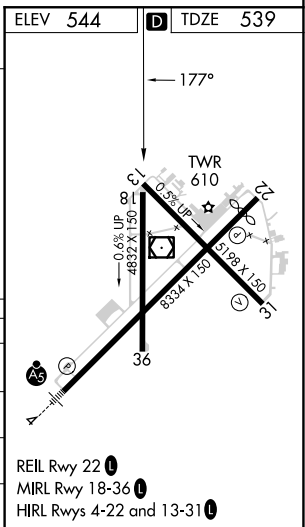
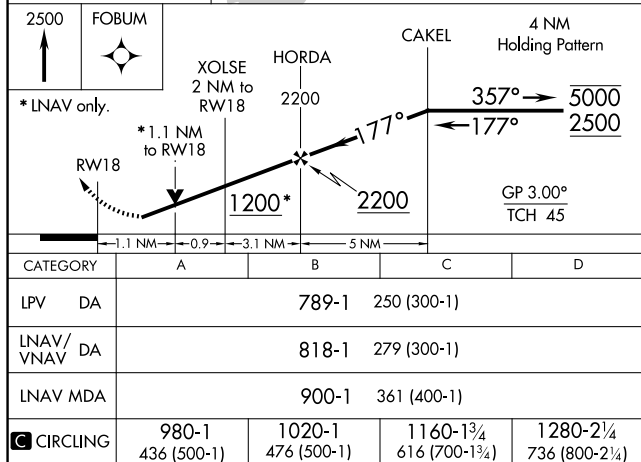
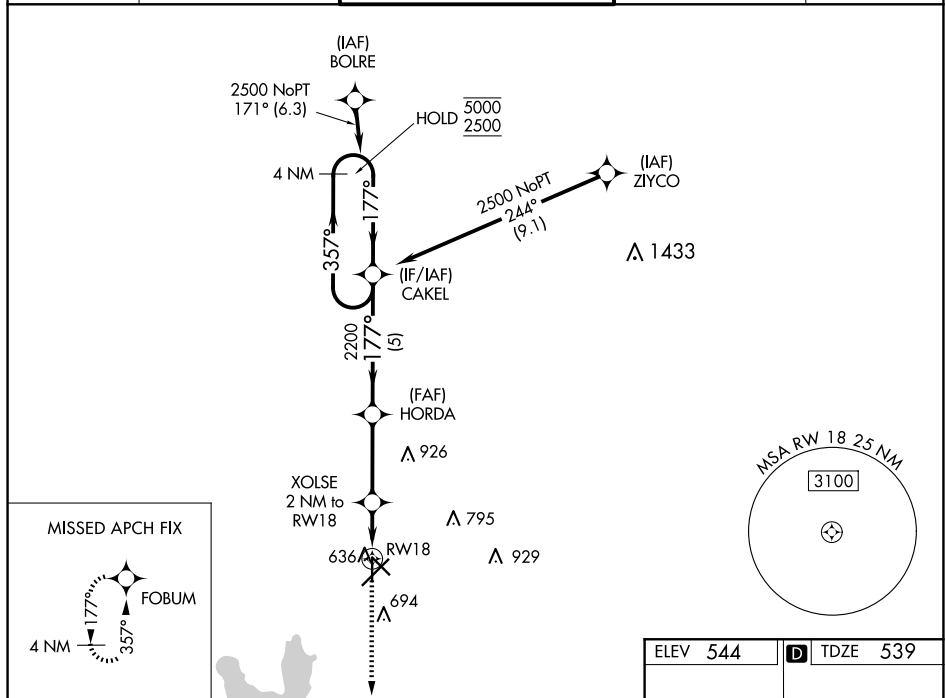
RNAV (GPS) RWY 18

RNP APCH.

T Rwy 18 helicopter visibility reduction below $\frac{3}{4}$ SM NA. For uncompensated
A Baro-VNAV systems, LNAV/VNAV NA below -6°C or above 54°C.

MISSED APPROACH: Climb to 2500 direct FOBUM and hold.

ATIS 126.25	LONGVIEW APP CON ★ 128.75 379.15	POUNDS TOWER★ 120.1(CTAF) 0 257.8	GND CON 121.9	UNICOM 122.95
-----------------------	--	---	-------------------------	-------------------------



TYLER, TEXAS
Amdt 1A 25FEB21

32°21'N-95°24'W

TYLER POUNDS RGNL (TYR)
RNAV (GPS) RWY 18

SC-2, 10 JUL 2025 to 07 AUG 2025