

TYLER, TEXAS

AL-622 (FAA)

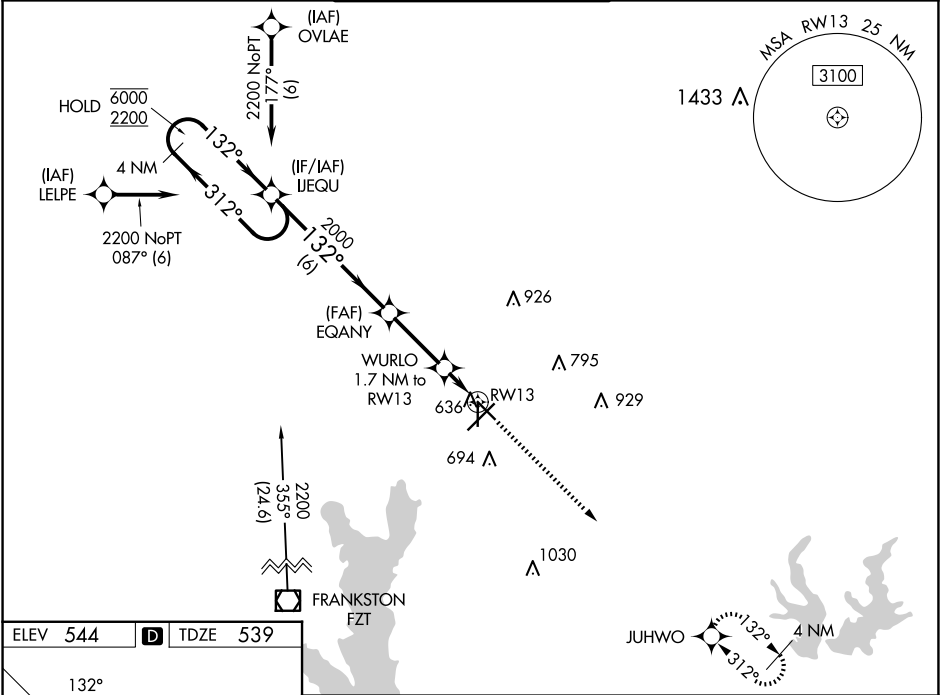
23278

WAAS CH 45701 W13A	APP CRS 132°	Rwy Idg 5198 TDZE 539 Apt Elev 544
--	------------------------	---

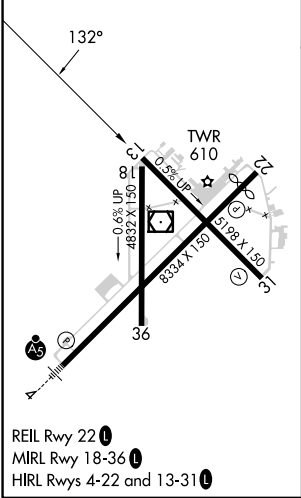
RNAV (GPS) RWY 13
TYLER POUNDS RGNL (TYR)

RNP APCH.		MISSED APPROACH: Climb to 3000 direct JUHWO and hold.		
▼ ▲ For uncompensated Baro-VNAV systems, LNAV/VNAV NA below -5°C or above 54°C.				

ATIS 126.25	LONGVIEW APP CON★ 128.75 379.15	POUNDS TOWER★ 120.1(CTAF) 257.8	GND CON 121.9	UNICOM 122.95
-----------------------	---	---	-------------------------	-------------------------



ELEV 544	D	TDZE 539
-----------------	----------	-----------------



4 NM Holding Pattern		IJEQU	EQANY	WURLO	JUHWO
6000 2200		132°	2000	1.7 NM to RW13	3000
GP 3.00° TCH 55		132°	*1100	*1 NM to RW13	JUHWO
		6 NM	2.8 NM	0.7	1 NM
CATEGORY	A	B	C	D	
LPV DA	739-3/4 200 (200-3/4)				
LNAV/VNAV DA	820-7/8 281 (300-7/8)				
LNAV MDA	900-1 361 (400-1)				
CIRCLING	980-1 436 (500-1)	1020-1 476 (500-1)	1160-1 3/4 616 (700-1 3/4)	1280-2 1/4 736 (800-2 1/4)	

TYLER, TEXAS
Amdt 3A 08OCT20

32°21'N-95°24'W

TYLER POUNDS RGNL (TYR)
RNAV (GPS) RWY 13

SC-2, 10 JUL 2025 to 07 AUG 2025

SC-2, 10 JUL 2025 to 07 AUG 2025