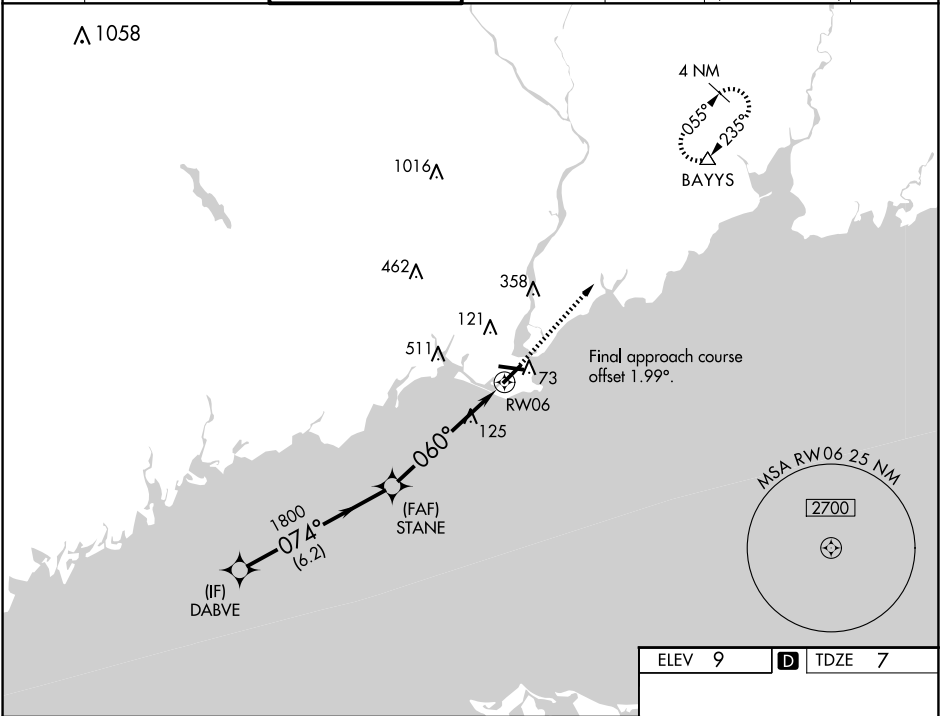


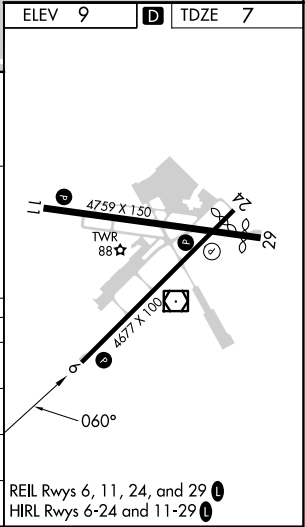
WAAS CH 78140 W06A	APP CRS 060°	Rwy Ldg TDZE Apt Elev	4677 7 9
--	------------------------	-----------------------------	-------------------------------------

RNAV (GPS) RWY 6
BRIDGEPORT/SIKORSKY (BDR)

RNP APCH - GPS.				MISSED APPROACH: Climb to 500, then climb to 2700 direct BAYYS and hold, continue climb-in-hold 2700.		
▼ For uncompensated Baro-VNAV systems, LNAV/VNAV NA below -14°C or above 54°C. ▲ Circling to Rwy 11, 29 NA at night. Rwy 6 helicopter visibility reduction below ¾ SM NA.						
ATIS 119.15	NEW YORK APP CON 124.075 343.65	BRIDGEPORT TOWER★ 120.9 0 (CTAF) 257.8	GND CON 121.75 257.8	CLNC DEL 121.75	CLNC DEL 124.075 (When twr closed)	UNICOM 123.0



DABVE		STANE		500	2700	BAYYS
2000		1800		↑	↑	△
GP 3.00° TCH 51		074°		1 NM to RWY 06		
1800		060°		RWY 06		
6.2 NM		4.5 NM		1 NM		
CATEGORY	A	B	C	D		
LPV DA		257-1	250 (300-1)			
LNAV/VNAV DA		284-1	277 (300-1)			
LNAV MDA		380-1	373 (400-1)			
CIRCLING	480-1 471 (500-1)	620-1 611 (700-1)	820-2½ 811 (900-2½)	820-2¾ 811 (900-2¾)		



NE-1, 10 JUL 2025 to 07 AUG 2025

NE-1, 10 JUL 2025 to 07 AUG 2025