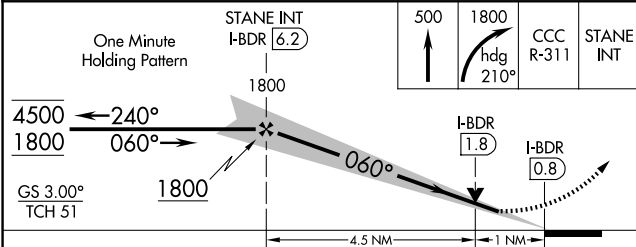
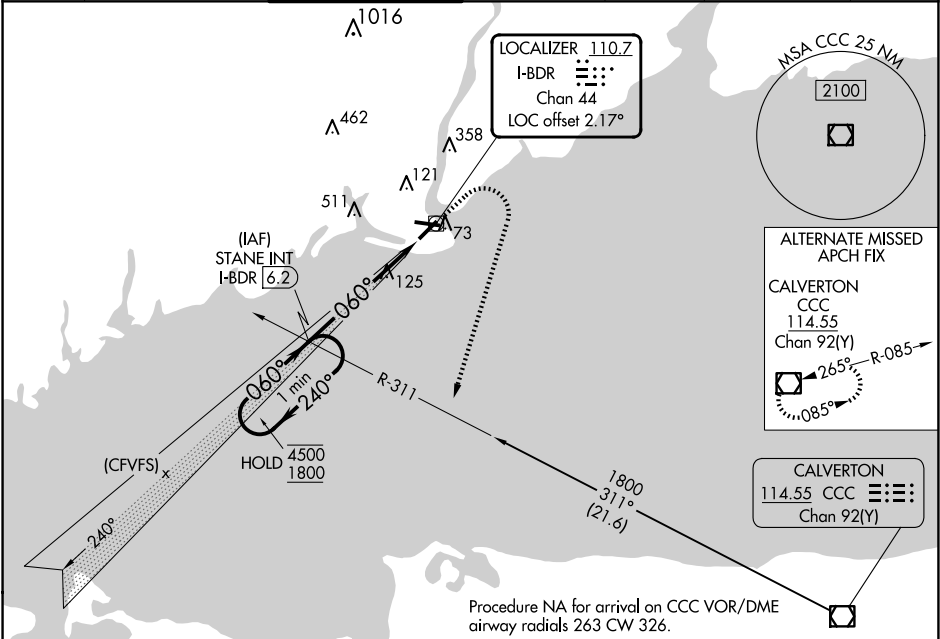


LOC/DME I-BDR <b>110.7</b> Chan <b>44</b>	APP CRS <b>060°</b>	Rwy Ldg TDZE <b>7</b> Apt Elev <b>9</b>
---	------------------------	---

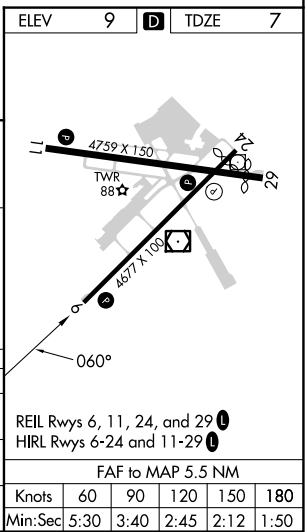
ILS or LOC RWY 6  
BRIDGEPORT/SIKORSKY (BDR)

<p><b>⚠</b> Circling to Rwy 11, 29 NA at night. Rwy 6 helicopter visibility reduction below ¼ SM NA. Autopilot coupled approach NA below 350.</p>	<p><b>⚠</b> MISSED APPROACH: Climb to 500 then climbing right turn to 1800 on heading 210° and CCC VOR/DME R-311 to STANE INT/I-BDR 6.2 DME and hold, continue climb-in-hold to 1800.</p>
---	---

ATIS <b>119.15</b>	NEW YORK APP CON <b>124.075 343.65</b>	BRIDGEPORT TOWER★ <b>120.9</b> (CTAF) <b>257.8</b>	GND CON <b>121.75 257.8</b>	CLNC DEL <b>121.75</b>	CLNC DEL <b>124.075</b> (When twr closed)	UNICOM <b>123.0</b>
-----------------------	---	---	--------------------------------	---------------------------	---	------------------------



CATEGORY	A	B	C	D
S-ILS 6		257-1	250 (300-1)	
S-LOC 6		380-1	373 (400-1)	
CIRCLING	480-1 471 (500-1)	620-1 611 (700-1)	820-2½ 811 (900-2½)	820-2¾ 811 (900-2¾)



NE-1, 10 JUL 2025 to 07 AUG 2025

NE-1, 10 JUL 2025 to 07 AUG 2025