

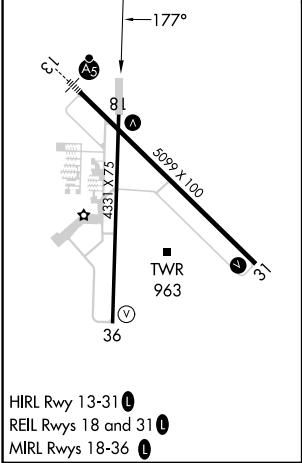
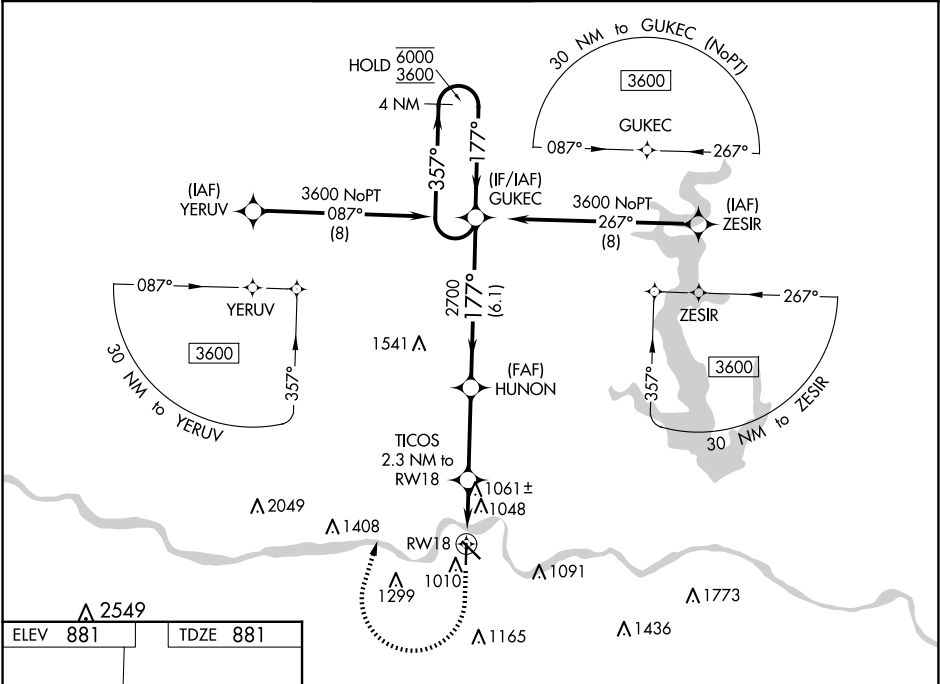
WAAS CH 53634 W18A	APP CRS 177°	Rwy Idg TDZE Apt Elev	4331 881 881
--	------------------------	-----------------------------	---

RNAV (GPS) RWY 18

PHILIP BILLARD MUNI (TOP)

RNP APCH.	MISSED APPROACH: Climb to 1500 then climbing right turn to 3600 direct GUKEC and hold.
▼ Rwy 18 helicopter visibility reduction below ¾ SM NA. For uncompensated Baro-VNAV systems, LNAV/VNAV NA below -19°C or above 54°C.	

ASOS 121.275	KANSAS CITY CENTER 123.8 343.7	TOPEKA TOWER ★ 118.7 (CTAF) 0 257.8	GND CON 121.9	CLNC DEL 121.9	UNICOM 122.95
------------------------	--	---	-------------------------	--------------------------	-------------------------



1500 ↑		3600 ↷		GUKEC ✦		GUKEC		4 NM Holding Pattern	
*LNAV only		TICOS 2.3 NM to RW18		HUNON 2700		357° → 6000 ← 177° 3600			
RW18		*1.3 NM to RW18		1640*		177°		2700	
1.3 NM		1 NM		3.3 NM		6.1 NM		GP 3.00° TCH 35	
CATEGORY		A		B		C		D	
LPV DA		1174-1 293 (300-1)						NA	
LNAV/ VNAV		1340-1½ 459 (500-1½)						NA	
LNAV MDA		1320-1 439 (500-1)				1320-1¼ 439 (500-1¼)		NA	
CIRCLING		1360-1 479 (500-1)		1440-1 559 (600-1)		1600-2 719 (800-2)		NA	