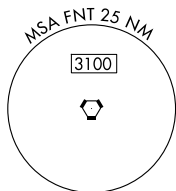


23222

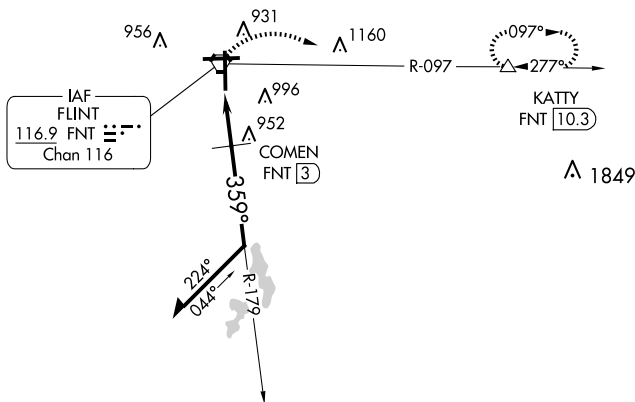
VOR RWY 36
BISHOP INTL (FNT)

MISSED APPROACH: Climbing right turn to 3000 on FNT VORTAC R-097 to KATTY/10.3 DME and hold.

ATIS 133.15	GREAT LAKES APP CON ★ 118.8 257.9	FLINT TOWER ★ 126.3 (CTAF) 257.9	GND CON 121.9	CLNC DEL 121.75	UNICOM 122.95
----------------	--------------------------------------	-------------------------------------	------------------	--------------------	------------------



CAUTION: Brightly lighted parking lot
4000' east of approach end Rwy 27
can easily be confused for Rwy 27.



ELEV 782 D TDZE 782

HIRL Rwy 9-27 and 18-36 I

REIL Rwy 18 and 36 I

Diagram illustrating the intersection of Runway 36 and Runway 27. Runway 36 is vertical, and Runway 27 is horizontal. The intersection is marked with a circle containing the number 4. A taxiway labeled 7201 X 150 is shown to the left of Runway 36. A tower labeled TWR 884 is located to the left of Runway 36. A star symbol is located to the right of Runway 36. A compass rose indicates a heading of 359°.

Diagram illustrating a flight plan with a circling approach. The flight path is shown with altitudes (3000, 179°, 2600, 359°, 1500) and distances (1.2 NM, 0.9 NM). The approach is for FNT VORTAC, with a circling approach for FNT 2.1 and COMEN FNT 3. The approach is for TCH 54, with a 3.06° angle. The flight plan is for KATY, FNT R-097, and the approach is for S-36.

BISHOP INTL (FNT)
VOR RWY 36

EC-1, 10 JUL 2025 to 07 AUG 2025