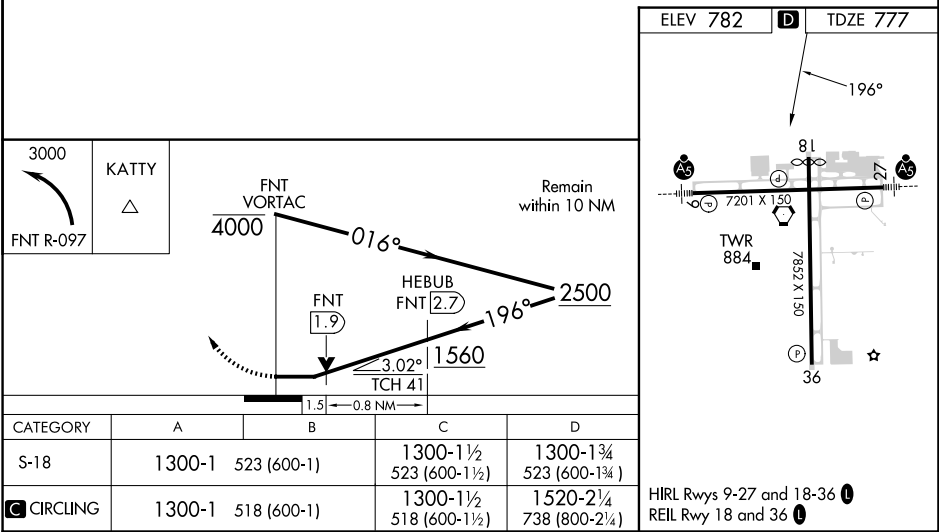
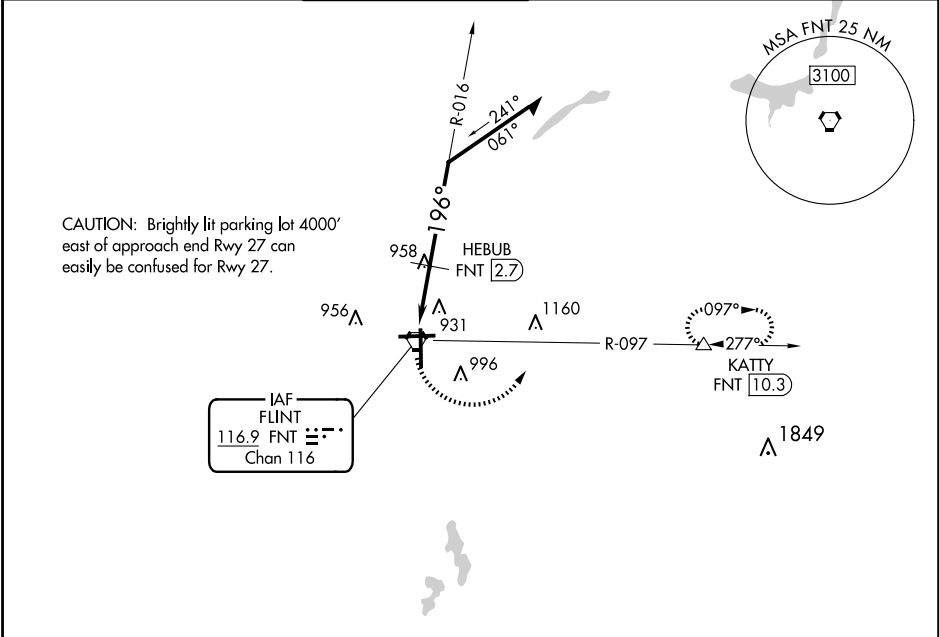


VORTAC FNT	APP CRS	Rwy Idg	7650
116.9	196°	TDZE	777
Chan 116		Apt Elev	782

VOR RWY 18  
BISHOP INTL (FNT)

<div><div><div></div><div></div></div><div>Rwy 18 helicopter visibility reduction below ¾ SM NA. DME required.</div></div>		MISSED APPROACH: Climbing left turn to 3000 on FNT VORTAC R-097 to KATTY/10.3 DME and hold.			
ATIS 133.15	GREAT LAKES APP CON ★ 118.8 257.9	FLINT TOWER ★ 126.3 (CTAF) 0 257.9	GND CON 121.9	CLNC DEL 121.75	UNICOM 122.95



EC-1, 10 JUL 2025 to 07 AUG 2025

EC-1, 10 JUL 2025 to 07 AUG 2025