

WAAS CH 65914 W36A	APP CRS 005°	Rwy Idg 7652 TDZE 782 Apt Elev 782
--	------------------------	---

RNAV (GPS) RWY 36

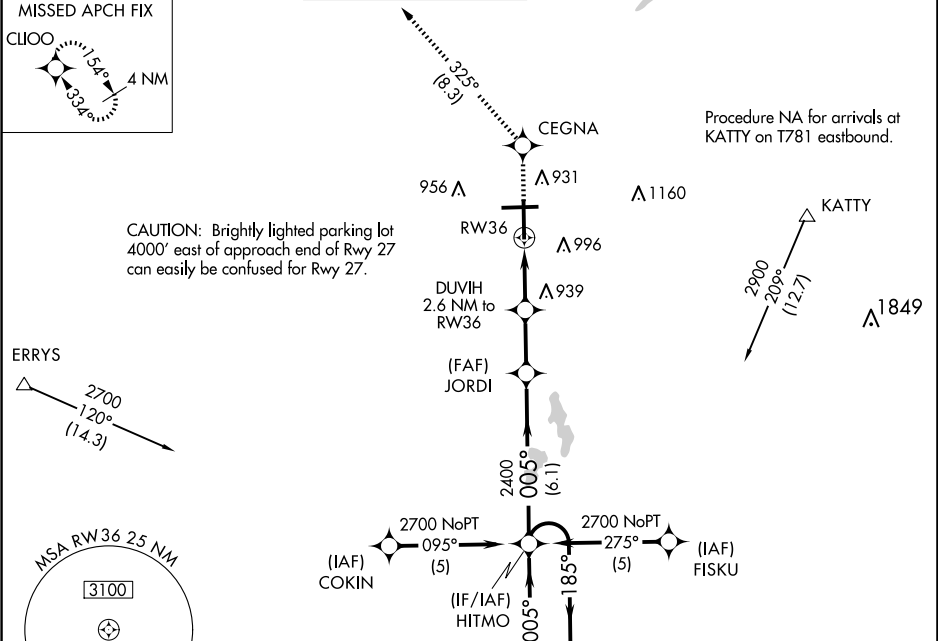
BISHOP INTL (F'NT)

⚠

For uncompensated Baro-VNAV systems, LNAV/VNAV NA below -16°C (4°F) or above 54°C (130°F). Rwy 36 helicopter visibility reduction below ¾ SM NA. DME/DME RNP -0.3 NA.

MISSED APPROACH: Climb to 3000 direct CEGNA and on track 325° to CLIOO and hold.

ATIS 133.15	GREAT LAKES APP CON ★ 118.8 257.9	FLINT TOWER ★ 126.3 (CTAF) 257.9	GND CON 121.9	CLNC DEL 121.75	UNICOM 122.95
-----------------------	---	--	-------------------------	---------------------------	-------------------------



ELEV 782 D TDZE 782

HIRL Rwys 9-27 and 18-36 I
REIL Rwy 18 and 36 I

4 NM Holding Pattern		HITMO	3000	CEGNA	CLIOO
		JORDI	2400	DUVIH 2.6 NM to RW36	RW36
GP 3.00° TCH 54		005°	2400	*1660	
		6.1 NM	2.3 NM	2.6 NM	
CATEGORY	A	B	C	D	
LPV DA	1123-1¼ 341 (400-1¼)				
LNAV/VNAV DA	1254-1¾ 472 (500-1¾)				
LNAV MDA	1260-1 478 (500-1)	1260-1¾ 478 (500-1¾)	1260-1½ 478 (500-1½)	1260-1½ 478 (500-1½)	
CIRCLING	1260-1 478 (500-1)	1300-1 518 (600-1)	1300-1½ 518 (600-1½)	1520-2¼ 738 (800-2¼)	

81

27

36

005°