

WAAS CH 72810 W27A	APP CRS 274°	Rwy Idg TDZE 770 Apt Elev 782
--	------------------------	---

RNAV (GPS) RWY 27

BISHOP INTL (F'NT)

▼
▲

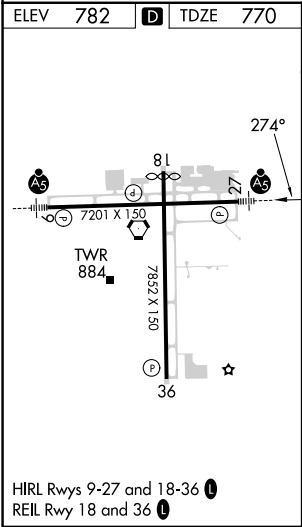
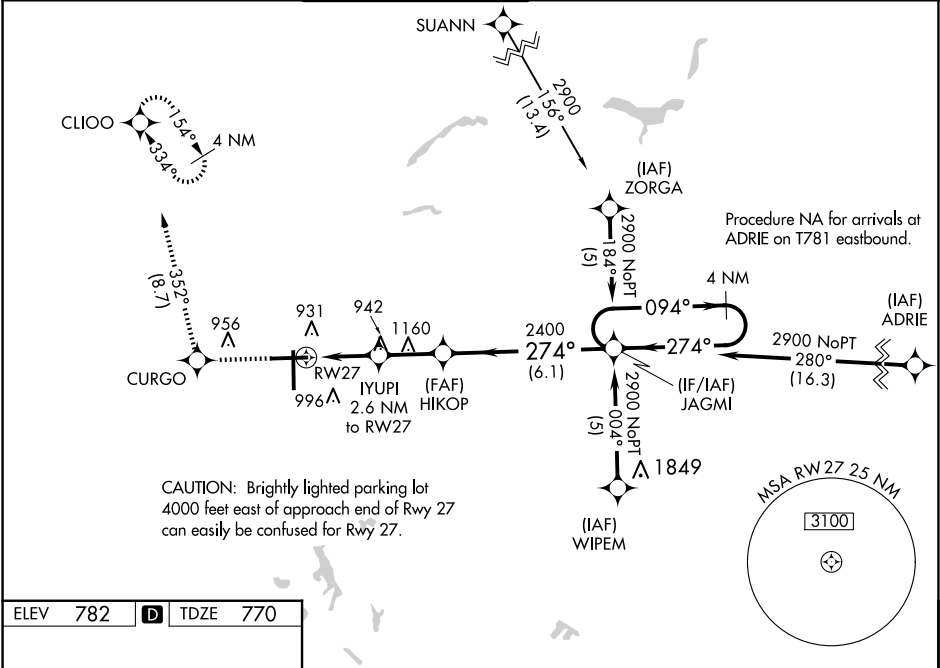
For uncompensated Baro-VNAV systems, LNAV/VNAV NA below -16°C (4°F) or above 54°C (130°F). Rwy 27 helicopter visibility reduction below ¾ SM NA. DME/DME RNP-0.3 NA. For inop ALS, increase LNAV/VNAV all Cats visibility to 1¾ SM, LNAV Cat A/B visibility to 1 SM and LNAV Cat C/D visibility to 1¾ SM.

MALSR

MISSED APPROACH:

Climb to 3000 direct
CURGO and track
352° to CLIOO
and hold.

ATIS 133.15	GREAT LAKES APP CON ★ 118.8 257.9	FLINT TOWER ★ 126.3 (CTAF) 0 257.9	GND CON 121.9	CLNC DEL 121.75	UNICOM 122.95
-----------------------	---	--	-------------------------	---------------------------	-------------------------



3000	CURGO	tr 352°	CLIOO	4 NM
				JAGMI Holding Pattern
* LNAV only				
		1.4 NM to RW27	2.6 NM to RW27	
			1640	2400
				GP 3.00° TCH 56
		1.4	1.2	2.3 NM
			6.1 NM	
CATEGORY	A	B	C	D
LPV DA	1098-¾ 328 (400-¾)			
LNAV/VNAV DA	1240-1 470 (500-1)			
LNAV MDA	1260-¾ 490 (500-¾)	1260-1 490 (500-1)		
CIRCLING	1260-1 478 (500-1)	1300-1 518 (600-1)	1300-1½ 518 (600-1½)	1520-2¼ 738 (800-2¼)

EC-1, 10 JUL 2025 to 07 AUG 2025

EC-1, 10 JUL 2025 to 07 AUG 2025