

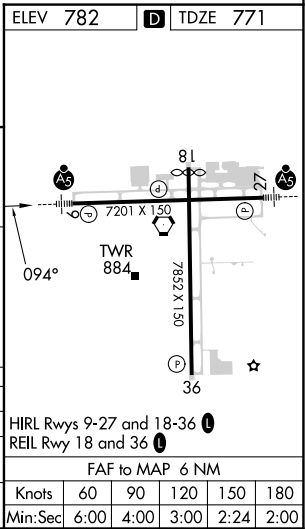
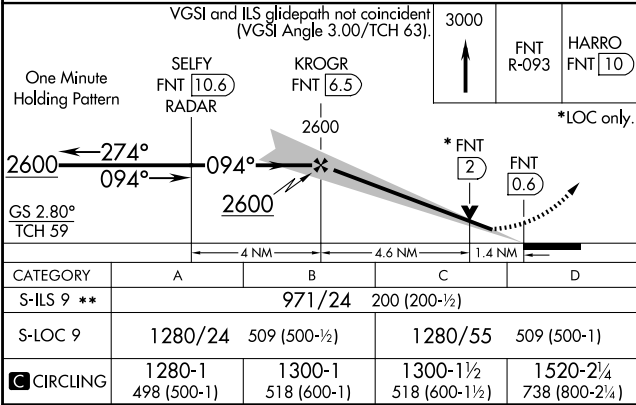
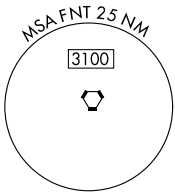
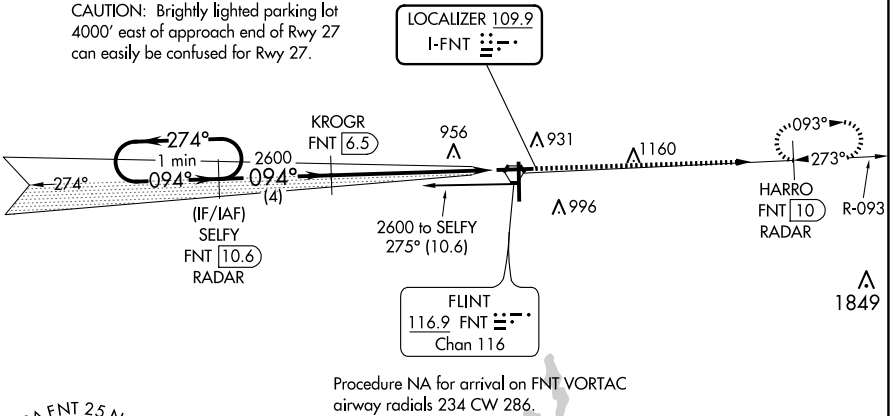


LOC I-FNT 109.9	APP CRS 094°	Rwy Idg 7201 TDZE 771 Apt Elev 782
---------------------------	------------------------	---

ILS or LOC RWY 9
BISHOP INTL (F'NT)

DME or RADAR required for procedure entry. DME or RADAR required.				MISSED APPROACH: Climb to 3000 on FNT VORTAC R-093 to HARRO/FNT VORTAC 10 DME/RADAR and hold.	
	DME from FNT VORTAC. Simultaneous reception of I-FNT and FNT DME required. For inop ALS, increase S-LOC 9 Cat C/D visibility to 1 3/8 SM. **RVR 1800 authorized with use of FD or AP or HUD to DA.				
ATIS 133.15	GREAT LAKES APP CON ★ 118.8 257.9	FLINT TOWER ★ 126.3 (CTAF) 257.9	GND CON 121.9	CLNC DEL 121.75	UNICOM 122.95

CAUTION: Brightly lighted parking lot 4000' east of approach end of Rwy 27 can easily be confused for Rwy 27.



EC-1, 10 JUL 2025 to 07 AUG 2025

EC-1, 10 JUL 2025 to 07 AUG 2025