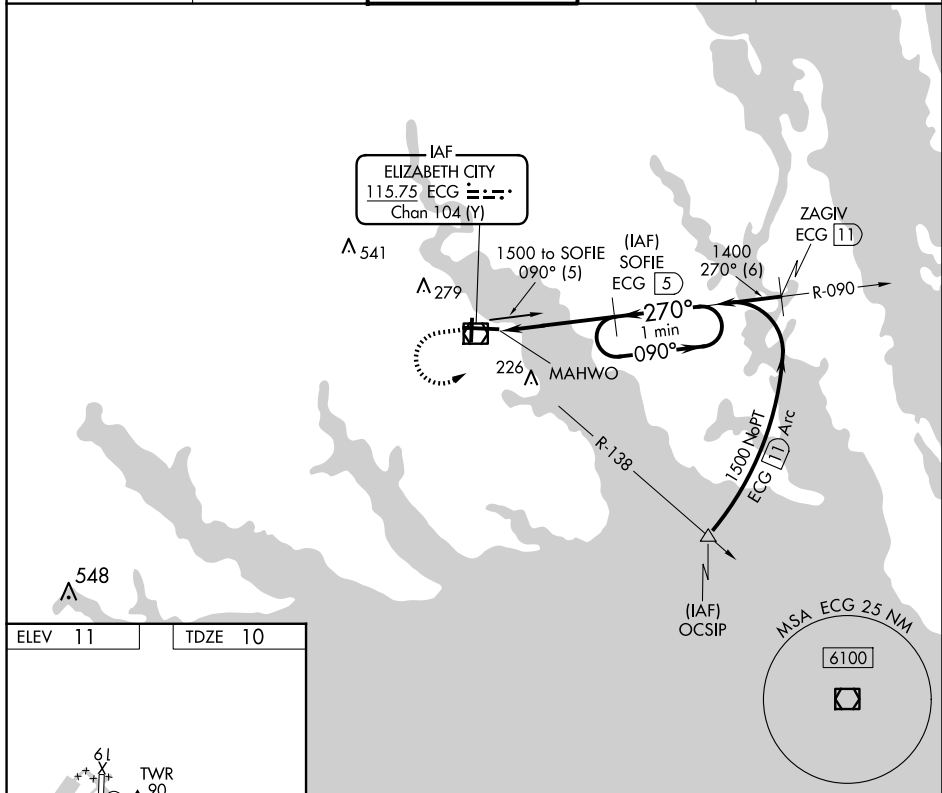


VOR/DME RWY 28
ELIZABETH CITY CG AIR STATION/RGNL (F/C)

MISSED APPROACH: Climb to 1000 then climbing left turn to 1500 via ECG R-090 to SOFIE 5 DME and hold

ASOS 124.375	NORFOLK APP CON 119.55 269.425	ELIZABETH CITY TOWER★ 120.5(CTAF) 0 355.6	GND CON 121.9	UNICOM 122.95
------------------------	--	---	-------------------------	-------------------------

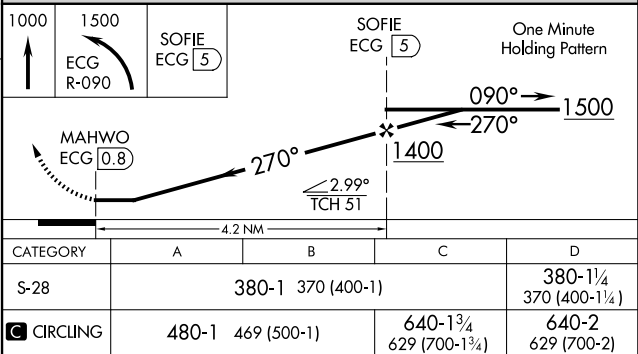


ELEV 11

TDZE 10

Diagram illustrating the layout of MIRA airport, showing runways, taxiways, and various navigational aids.

- Runways:** Runway 10-28 is highlighted in red. Other runways shown include Runway 19-01 (grey) and Runway 04-22 (black).
- Taxiways:** Taxiway A2 (marked with a star), Taxiway B, and Taxiway C are labeled.
- Navigational Aids:**
 - A2:** Located near the intersection of Runway 10-28 and Taxiway A2.
 - TWR 90:** Tower location marked with a star.
 - H:** Multiple helipad locations marked with 'H'.
 - V:** VORTAC station located south of Runway 10-28.
 - DME:** Distance Measuring Equipment station located south of Runway 10-28.
- Distances:**
 - 7219 x 1.50: Distance from the tower to the end of Runway 10-28.
 - 61: Distance from the tower to the end of Taxiway A2.
 - 0.45 x 1.50: Distance from the tower to the end of Taxiway B.
- Other Features:**
 - MIRL Rwy 1-19:** Military Reservation Lighted Runway 1-19.
 - MIRL Rwy 10-28:** Military Reservation Lighted Runway 10-28.
 - REIL Rwy 10 and 28:** Runway End Identifier Lights for Runway 10 and Runway 28.



SE-2, 10 JUL 2025 to 07 AUG 2025

SE-2. 10 JUL 2025 to 07 AUG 2025