

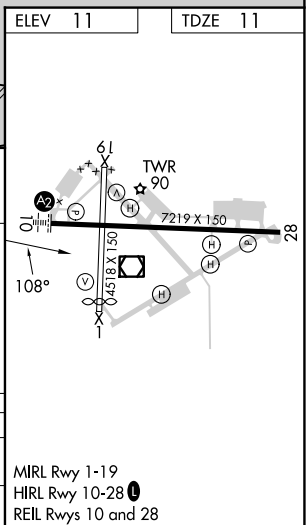
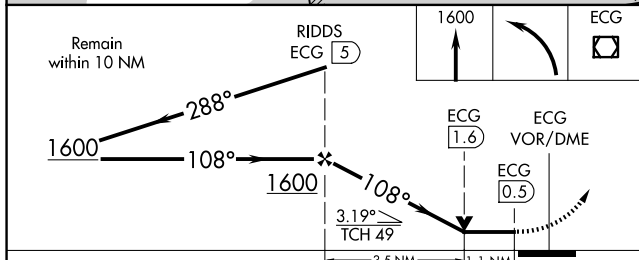
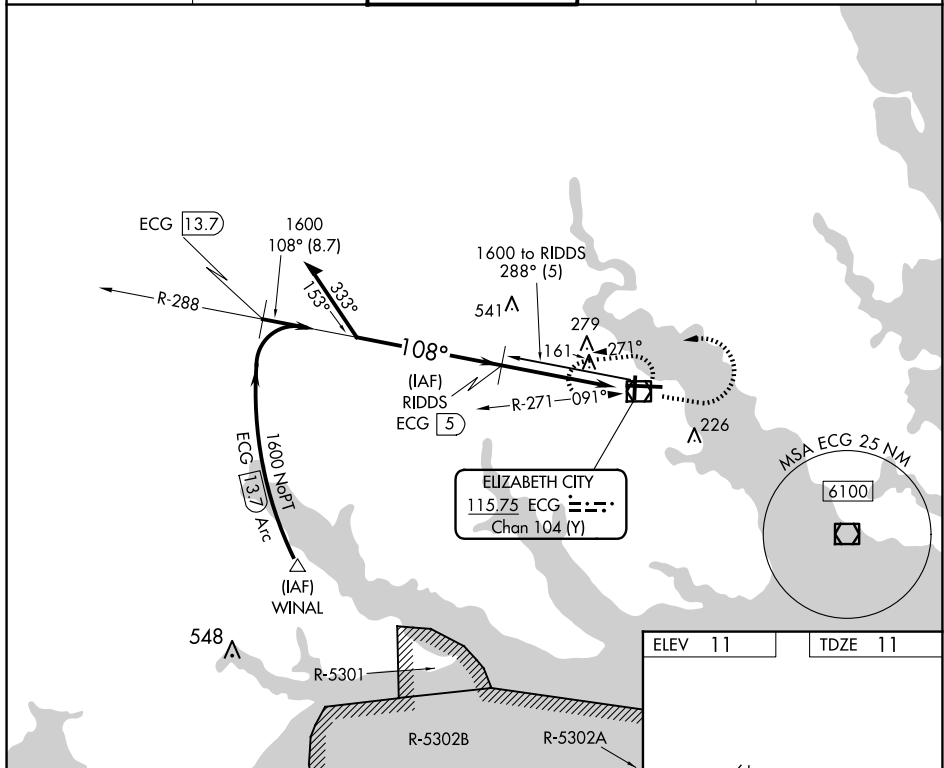
VOR/DME RWY 10
ELIZABETH CITY CG AIR STATION/RGNL (ECG)

SALS

A₂

MISSED APPROACH: Climb to 1600 then left turn direct ECG VOR/DME and hold.

ASOS 124.375	NORFOLK APP CON 119.55 269.425	ELIZABETH CITY TOWER ★ 120,5(CTAF) 0 355,6	GND CON 121,9	UNICOM 122,95
------------------------	------------------------------------------	------------------------------------------------------	-------------------------	-------------------------



CATEGORY	A	B	C	D
S-10	540-1 529 (600-1)		540-1 $\frac{1}{4}$ 529 (600-1 $\frac{1}{4}$)	
C CIRCLING	540-1 529 (600-1)		640-1 $\frac{3}{4}$ 629 (700-1 $\frac{3}{4}$)	640-2 629 (700-2)

SE-2, 10 JUL 2025 to 07 AUG 2025

SE-2, 10 JUL 2025 to 07 AUG 2025