

WAAS
CH **65703**
W10A

APP CRS
103°

Rwy Idg
TDZE **11**
Apt Elev **11**

RNAV (GPS) RWY 10

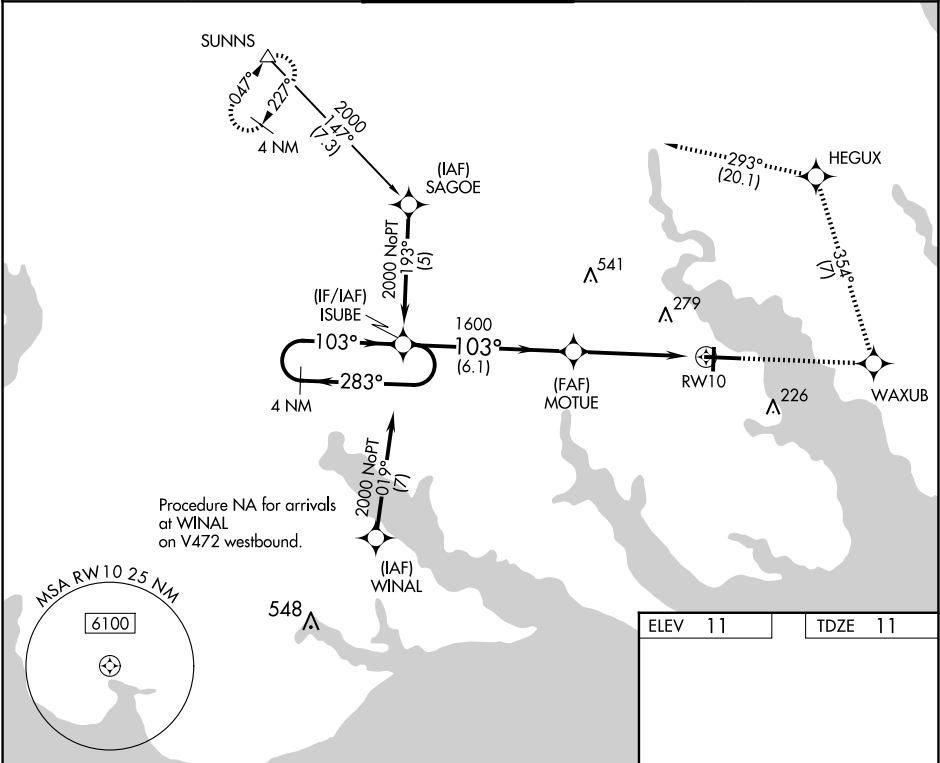
ELIZABETH CITY CG AIR STATION/RGNL (E/C/G)

RNP APCH.
▼ Procedure NA when tethered balloon located approximately 2 miles southeast of airport is flying.

SALS
A2

MISSED APPROACH: Climb to 2000 direct WAXUB and left turn on track 354° to HEGUX and 2000 on track 293° to SUNNS and hold.

ASOS 124.375	NORFOLK APP CON 119.55 269.425	ELIZABETH CITY TOWER★ 120.5 (CTAF) 355.6	GND CON 121.9	UNICOM 122.95
------------------------	--	--	-------------------------	-------------------------



VGSI and RNAV glidepath not coincident (VGSI Angle 3.00/TCH 49).

4 NM Holding Pattern ISUBE

2000 ← 283° 103° →

GP 3.00° TCH 58

2000 WAXUB

HEGUX

2000 SUNNS

*LNAV only.

*1.3 NM to RW10

6.1 NM

3.4 NM

1.3 NM

CATEGORY	A	B	C	D
LPV DA	261-3/4		250 (300-3/4)	
LNAV MDA	460-1	449 (500-1)	460-1 3/8	449 (500-1 3/8)
CIRCLING	480-1	469 (500-1)	640-1 3/4 629 (700-1 3/4)	640-2 629 (700-2)

MIRL Rwy 1-19
HIRL Rwy 10-28
REIL Rws 10 and 28