

APP CRS
358°

Rwy Idg
4219

TDZE
11

Apt Elev
11

RNAV (GPS) RWY 1

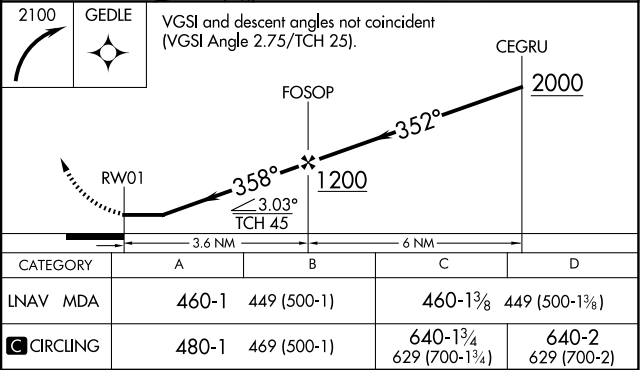
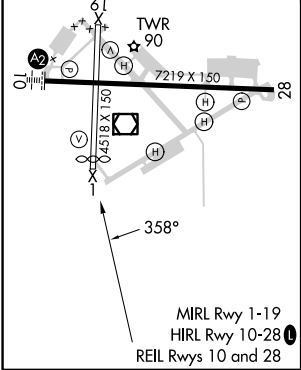
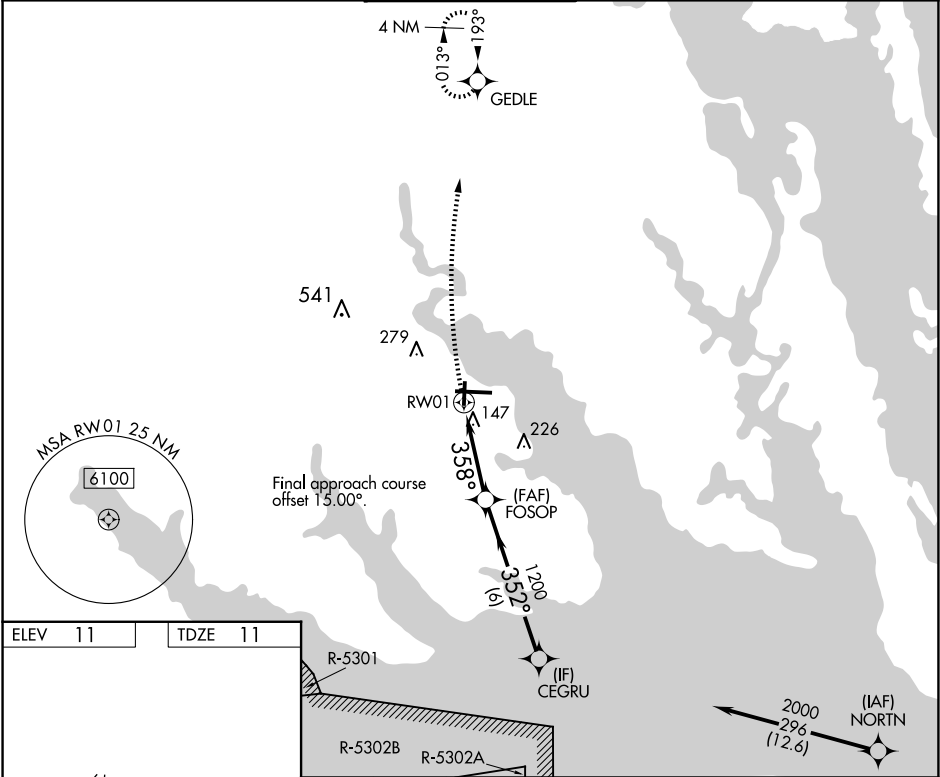
ELIZABETH CITY CG AIR STATION/RGNL (E/C/G)

RNP APCH.

Rwy 1 helicopter visibility reduction below ¾ SM NA. ATC clearance required to penetrate R-5302B. Procedure NA when tethered balloon located approximately 2 miles southeast airport is flying.

MISSED APPROACH: Climbing right turn to 2100 direct GEDLE and hold.

ASOS 124.375	NORFOLK APP CON 119.55 269.425	ELIZABETH CITY TOWER ★ 120.5 (CTAF) 355.6	GND CON 121.9	UNICOM 122.95
-----------------	-----------------------------------	--	------------------	------------------



SE-2, 10 JUL 2025 to 07 AUG 2025

SE-2, 10 JUL 2025 to 07 AUG 2025