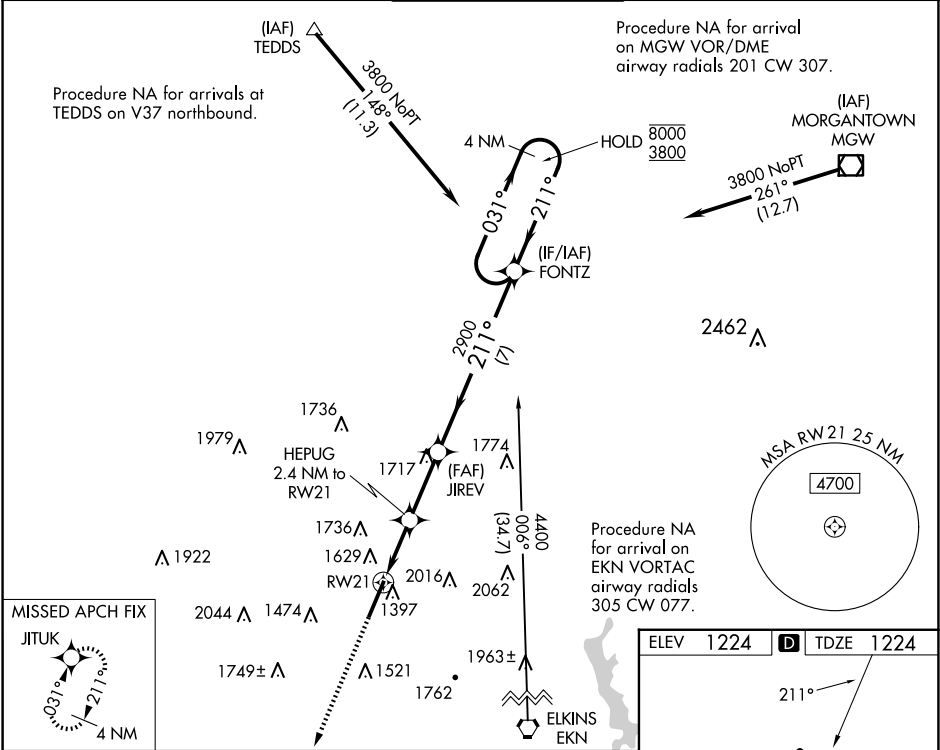


WAAS CH 82504 W21A	APP CRS 211°	Rwy Idg 7130 TDZE 1224 Apt Elev 1224
--	------------------------	---

RNAV (GPS) RWY 21

NORTH CENTRAL WEST VIRGINIA (CKB)

RNP APCH. For uncompensated Baro-VNAV systems, LNAV/VNAV NA below -16°C or above 54°C. For inop ALS, increase LNAV Cats C and D visibility to 1½ SM.			MALSR 	MISSED APPROACH: Climb to 3900 direct JITUK and hold.
ATIS 127.825	CLARKSBURG APP CON ★ 121.15 284.65	CLARKSBURG TOWER ★ 126.7 (CTAF) 257.925	GND CON 121.9	UNICOM 123.0



3900	JITUK	HEPUG 2.4 NM to RW21	JIREV	FONTZ	4 NM Holding Pattern
*LNAV only.		*1.6 NM to RW21	2900	031° → 8000 ← 211° 3800	
		RW21	*2020	2900	GP 3.00° TCH 60
		1.6 NM	0.8 NM	2.7 NM	7 NM
CATEGORY	A	B	C	D	
LPV DA	1424/24		200 (200-½)		
LNAV/VNAV DA	1786-1⅜		562 (600-1⅜)		
LNAV MDA	1800/24		576 (600-½)		
CIRCLING	1940-1 716 (800-1)		2040-1¼ 816 (900-1¼)		
	2320-3		1096 (1100-3)		

