

|  |                        |   |
|--|------------------------|---|
| TACAN IAG<br>Chan <b>47</b><br>(111.0) | APP CRS<br><b>286°</b> | Rwy Idg<br>TDZE <b>588</b><br>Apt Elev <b>592</b> |
|--|------------------------|---|

TACAN RWY 28R

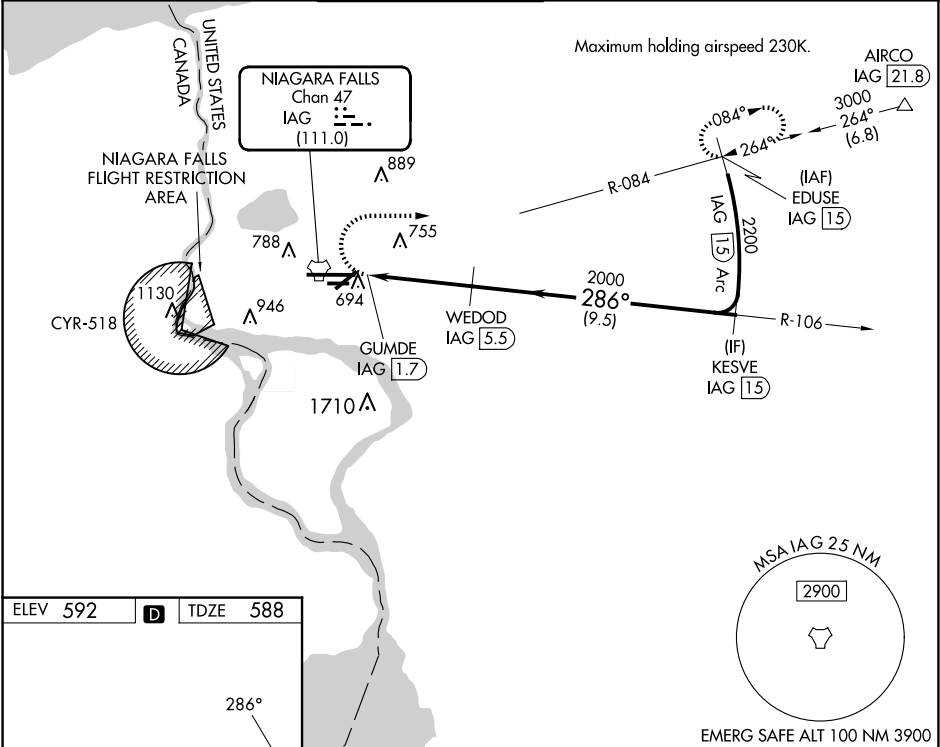
NIAGARA FALLS INTL (IAG)

⚠ When local altimeter setting not received, use Buffalo Niagara Intl altimeter setting; increase all MDA 60 feet and S-28R visibility Cat C, D and E to RVR 4500 and Circling Cat C, D and E visibility ¼ SM. Circling NA for Cat E south of Rwy 10L-28R. For inop MALSR, increase S-28R Cat A/B visibility to RVR 5000 and Cat C/D/E to RVR 6000. Rwy 28R helicopter visibility reduction below ¾ SM NA. Rwy 6, 10R, 24, 28L helicopter visibility reduction below 1 SM NA. Circling Rwy 6, 10R, 24, 28L NA at night.

MALSR

MISSED APPROACH:  
Climbing right turn to 3000 on heading 100° and IAG R-084 to EDUSE/IAG 15 DME and hold.

|                            |                                       |   |                               |                                 |                         |
|----------------------------|---------------------------------------|---|-------------------------------|---------------------------------|-------------------------|
| ATIS<br><b>120.8 269.4</b> | BUFFALO APP CON<br><b>126.5 317.6</b> | NIAGARA TOWER★<br><b>118.5 (CTAF) 0 349.0</b> | GND CON<br><b>125.3 275.8</b> | CLNC DEL<br><b>119.25 251.1</b> | UNICOM<br><b>122.95</b> |
|----------------------------|---------------------------------------|---|-------------------------------|---------------------------------|-------------------------|



ELEV 592    **D**    TDZE 588

|                            |                        |                       |                         |  |              |
|----------------------------|------------------------|-----------------------|-------------------------|--|--------------|
| 3000                       | hdg 100°               | IAG R-084             | EDUSE IAG 15            | VGSI and descent angles not coincident (VGSI Angle 2.50/TCH 67). | KESVE IAG 15 |
| EMERG SAFE ALT 100 NM 3900 |                        |                       |                         |  |              |
| IAG TACAN                  |                        | GUMDE IAG 1.7         | WEDOD IAG 5.5           | 2200   |              |
| 0.5 NM                     |                        | 3.8 NM                |                         | 9.5 NM   |              |
| CATEGORY                   | A                      | B                     | C                       | D  | E            |
| S-28R                      | 1000/40    412 (500-¾) |                       |                         |  |              |
| CIRCLING                   | 1100-1    508 (600-1)  | 1280-2<br>688 (700-2) | 1360-2½<br>768 (800-2½) | 1360-2¾<br>768 (800-2¾)  |              |

TDZ/CL Rwy 28R 0

REIL Rwys 6, 10R, 24, and 28L 0

HIRL Rwy 10L-28R 0

MIRL Rwys 6-24 and 10R-28L 0